

To: Operations and Scheduling Committee
From: Anne Muzzini, Director of Planning and Marketing
Reviewed By:

Date: September 21, 2010

SUBJECT: Elimination of #98 and implementation of new route to CSU

SUMMARY OF ISSUES:

A proposal was discussed at the last O&S meeting whereby a new route would be developed to serve the Cal State University East Bay (CSU) campus using the service hours currently used on the 98X.

The most productive corridor for a new route to CSU is Clayton Road and routing along this corridor has the best chance of meeting the farebox recovery criteria for continued RM2 funding. Staff has developed a schedule for the new route that uses the same number of hours as the 98X. Details are shown below:

First trip departs BART Concord at 7:15am

Last trip departs CSU at 10:12pm

Headways: 30 minute in the peak and 60 minute mid-day and late night

A public hearing was held for this new route, (then called the 10X) in January. On 9/28/2010 a public hearing was held on the elimination of the 98X. Comments received will be presented at the Committee meeting.

RECOMMENDATIONS:

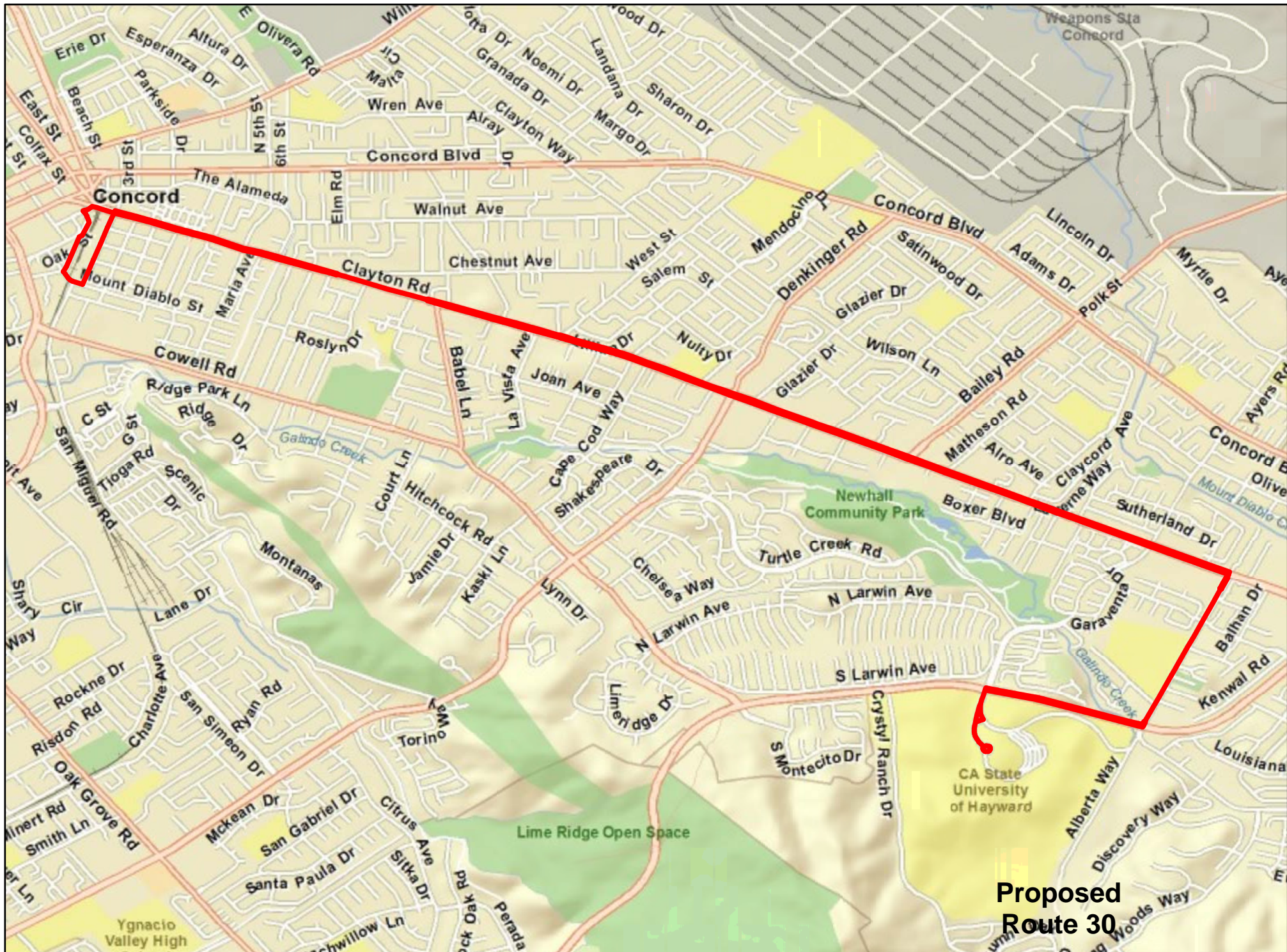
Staff recommends that the Committee consider public comment, then decide whether or not to support a plan to eliminate the 98X and replace it with a new route connecting BART Concord to CSU via Clayton Road.

FINANCIAL IMPLICATIONS:

RM2 Funding will be lost next year if a plan is not communicated to MTC that will address the fact that the 98X is not meeting the farebox recovery goal.

OPTIONS:

1. Approve plan to replace the 98X with a new route serving CSU
2. Keep service as is and lose \$414,000 in RM2 funding
3. Other action as determined by the Committee



**Proposed
Route 30**