

Agenda Item 7.a

TO: O&S Committee

DATE: November 10, 2010

FROM: Anne Muzzini
Director of Planning & Marketing

SUBJ: Fixed Route Reports

Fixed Route Operating Reports for October 2010

1. Monthly Boarding's Data

The following represent the numbers that are most important to staff in evaluating the performance of the fixed route system.

<u>Title</u>	FY 2011		<u>Annual Goal</u>
	<u>Current Month</u>	<u>YTD Avg</u>	
Total Passengers	289,589		
Average Weekday	12,643	11,671	
Pass/Rev Hour	16.4	15.5	FY11 Goal > 17.0
Missed Trips	0.15%	0.10%	FY11 Goal < 0.25%
Miles between Road Calls	30,203	29,650	FY11 Goal > 18,000

* Based on Standards from updated SRTP

Analysis

Average weekday ridership in October (12,643 passengers) is equal to the September ridership of 12,658 passengers but 5% lower than October 2009 of 13,283 passenger. See the attached table showing weekday boardings trend. Productivity in October was equal to 16.4 passengers per hour as compared to September's 16.7 passengers per hour. September and October are typically the highest ridership months of the year.

The percentage of missed trips was higher in October to (0.15%) as compared to the prior month of (0.10%) in September, but is within the goal set by the Board (0.25%). The YTD average is 0.10% missed trips.

The number of miles between roadcalls was equal to 30,203 miles which is slightly lower than prior month. The year to date average is 29,650 miles between roadcalls.

**MONTHLY BOARDINGS
Operations Data Summary**

Fixed Route Boardings		Passengers by Revenue Hrs/Miles			Service Days		Fiscal YTD Comparison Passenger Boardings		
October 2010 - Fixed Route Boardings	289,253	Revenue Hours -	October10	17,608	Weekdays -	October10	21	Fiscal 2011 YTD	1,084,361
Pavilion	336		October09	18,646		October09	22		
Bus Bridge	0	Revenue Miles -	October10	196,275	Saturdays -	October10	5	Fiscal 2010 YTD	1,075,511
Special	0		October09	184,437		October09	5		
					Sundays -	October10	5		
						October09	4		
October 2010 Total Boardings	289,589	Passengers per Mile		1.48	Total Days - 2010	31		YTD Trend	99.2%
October 2009 Total Boardings	316,454	Passengers per Hour		16.45	2009	31		Monthly Trend	108.5%

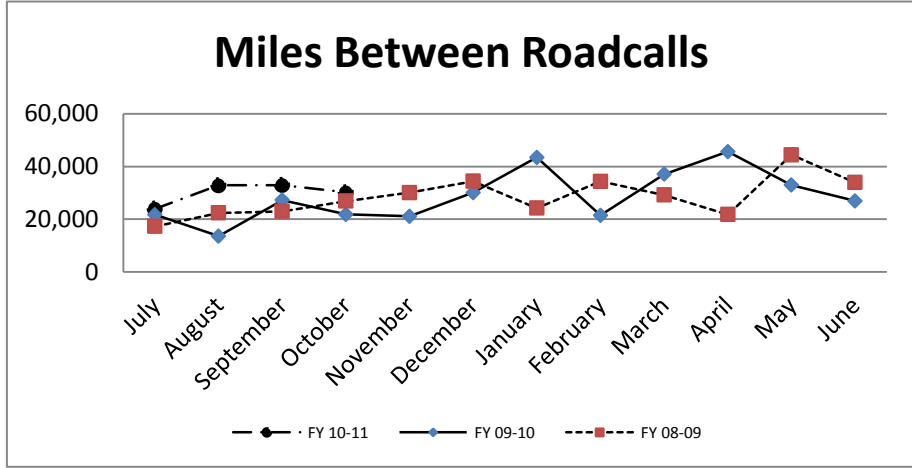
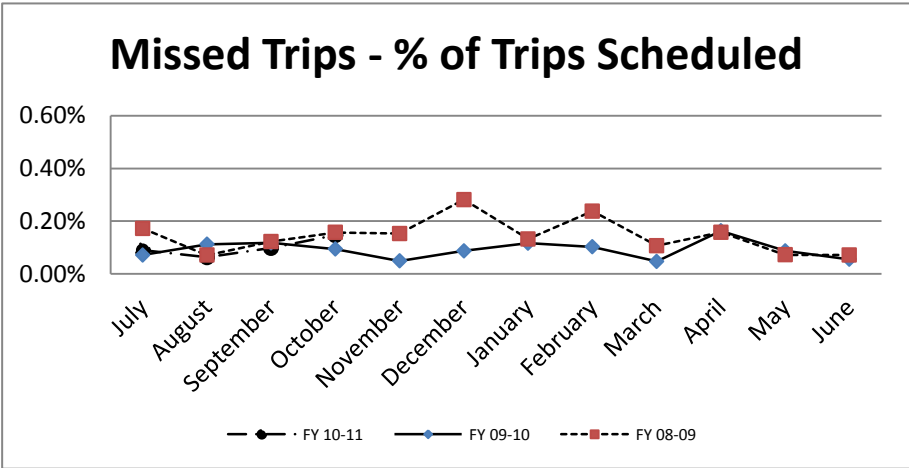
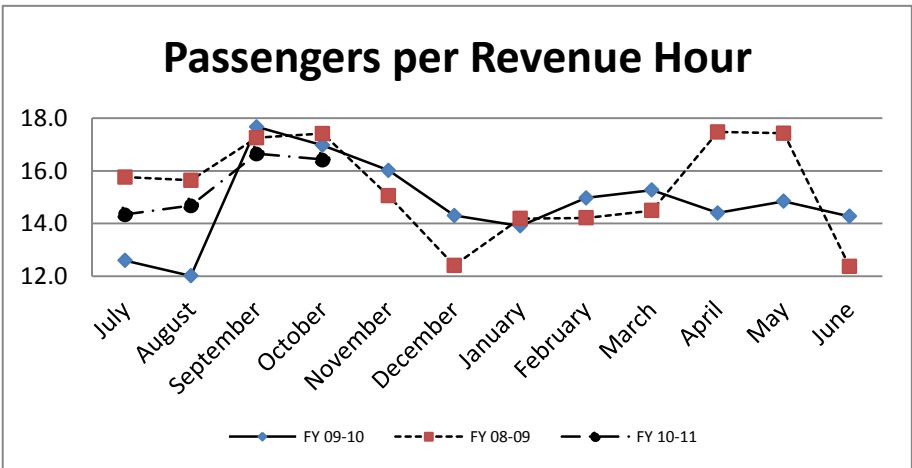
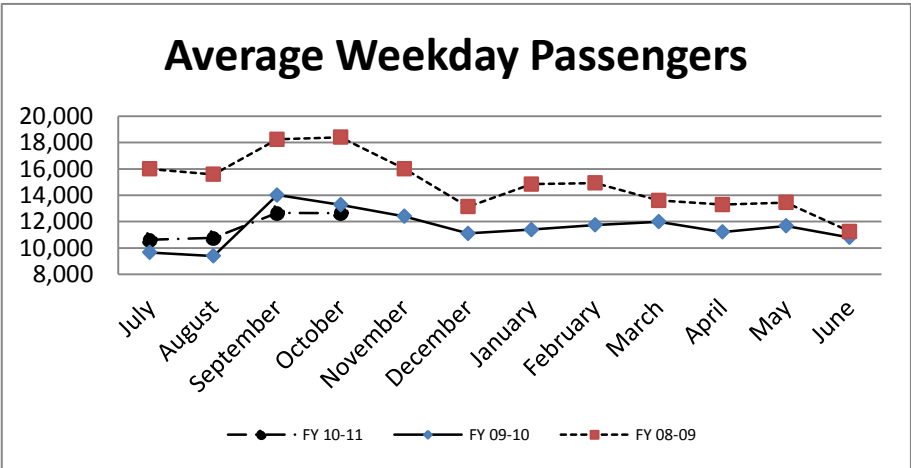
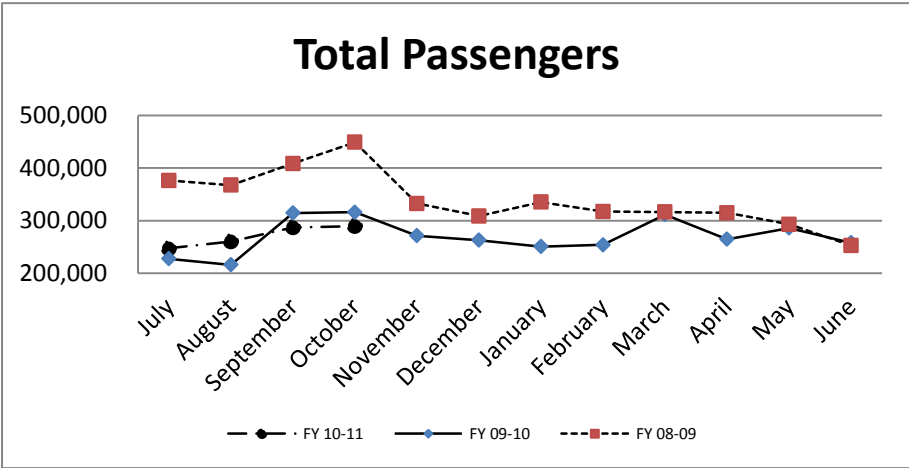
October 2010 Fixed Route Passenger Total						October 2010	October 2010
Route	Destination Information	Weekday	Saturday	Sunday	Total	Weekday Average	Passengers per Revenue Hour
1	Rossmoor / Shadelands	8,274			8,274	394	15.3
2	Rudgear / Walnut Creek	1,110			1,110	53	6.0
4	Walnut Creek Downtown Shuttle	19,682	2,581	1,921	24,183	937	26.1
5	Creekside / Walnut Creek	1,613			1,613	77	8.3
6	Lafayette / Moraga / Orinda	9,390	679	421	10,489	447	14.7
6L	Orinda / Orinda Village	101			101	5	5.1
7	Shadelands / Pleasant Hill / Walnut Creek	4,507			4,507	215	6.7
9	DVC / Walnut Creek	13,437			13,437	640	15.4
10	Concord / Clayton Rd	21,822			21,822	1,039	26.8
11	Treat Blvd / Oak Grove	6,680			6,680	318	17.9
14	Monument Blvd	15,001			15,001	714	18.1
15	Treat Boulevard	12,016			12,016	572	20.1
16	Alhambra Ave / Monument Blvd	15,574			15,574	742	14.0
17	Olivera/Solano / Salvio / North Concord	6,650			6,650	317	16.6
18	Amtrak / Merello / Pleasant Hill	9,858			9,858	469	15.8
19	Amtrak / Pacheco Blvd / Concord	2,968			2,968	141	10.2
20	DVC / Concord	26,393			26,393	1,257	27.9
21	Walnut Creek / San Ramon Transit Center	13,129			13,129	625	13.8
25	Lafayette / Walnut Creek	1,138			1,138	54	4.7
28	North Concord / Martinez	6,927			6,927	330	10.9
35	Dougherty Valley	8,170			8,170	389	12.0
36	San Ramon / Dublin	5,637			5,637	268	10.1
91X	Concord Commuter Express	878			878	42	11.7
92X	Ace Shuttle Express	3,202			3,202	152	18.4
93X	Kirker Pass Express	3,939			3,939	188	15.1
95X	San Ramon / Danville Express	2,548			2,548	121	12.1
96X	Bishop Ranch Express	8,494			8,494	404	13.1
97X	Bishop Ranch Express	1,624			1,624	77	7.9
98X	Martinez Express	7,567			7,567	360	11.2
250 *	Gael Rail Service	78	116	85	279	9	2.7
301	Rossmoor / John Muir Medical Center		470	340	810		9.8
311	Concord / Oak Grove / Treat Blvd / WC		920	763	1,683		11.1
314	Clayton Rd / Monument Blvd / PH		5,325	3,512	8,837		21.9
315	Concord / Willow Pass / Landana		460	223	683		10.1
316	Alhambra / Merello / Pleasant Hill		1,467	771	2,238		12.8
320	DVC / Concord		1,035	574	1,610		13.1
321	San Ramon / Walnut Creek		1,259	823	2,082		11.9
600's	Select Service	27,102			27,102	1,291	30.6
TOTALS		265,509	14,313	9,432	289,253	12,643	16.4

* Data from Link

** Seasonal Route

**TRANSPORTATION and MAINTENANCE
Operations Data Summary**

TRANSPORTATION	2009 October	2009 November	2009 December	2010 January	2010 February	2010 March	2010 April	2010 May	2010 June	2010 July	2010 August	2010 September	2010 October	FY10 FISCAL YTD
Number of Buses	131	131	131	131	131	131	131	131	131	131	131	131	131	131
Totals Hub Miles	283,616	253,077	270,769	260,473	257,503	296,254	273,663	263,604	269,248	239,465	262,880	263,567	271,831	1,037,743
Work Days	31	29	30	30	28	31	30	30	30	30	31	30	31	122
Revenue Hours	18,646	16,903	18,369	18,023	16,967	19,739	18,386	17,969	17,987	17,233	17,560	17,210	17,608	69,611
Operator Pay Hours	31,546	30,191	40,098	30,930	27,886	31,854	31,135	31,854	30,591	30,549	30,929	30,043	N/A	91,521
Number of Operators	170	168	167	167	167	167	169	168	168	166	166	166	163	165
FT Extra Board	62	20	21	17	45	68	31	63	42	31	29	10	74	144
Unscheduled Absences	332	331	336	282	240	282	366	281	221	319	352	321	395	1,387
Worker Comp.	120	117	97	109	94	126	152	141	125	119	132	113	164	528
Sick leave	212	214	239	173	146	156	214	140	96	200	220	208	231	859
Collision Accidents	5	9	2	3	5	4	5	4	8	2	6	3	7	18
Passenger Accidents	13	9	3	15	4	7	16	9	12	8	10	5	6	29
Total Chargeable Collisions	3	4	1	1	2	1	0	3	4	0	1	1	4	6
Chargeable/100K Miles	1.05	1.58	0.36	0.38	0.77	0.33	0.00	1.13	1.48	0.00	0.38	0.37	1.47	0.57
Number of Trips Scheduled	24,534	22,502	24,064	22,904	22,420	25,514	24,519	22,964	23,648	22,317	23,711	23,382	23,865	93,275
Number of Trips Missed	23	11	21	28	23	12	40	20	13	20	15	23	35	93
Of Trips Scheduled - % Missed	0.09%	0.05%	0.09%	0.12%	0.10%	0.05%	0.16%	0.09%	0.05%	0.09%	0.06%	0.10%	0.15%	0.10%
Of Trips Missed - Mechanical	16	4	15	10	19	8	18	9	10	18	7	17	11	53
On Time Performance %	90%	93%	96%	95%	92%	93%	95%	93%	94%	96%	93%	92%	93%	93%
MAINTENANCE														
A/C Operative - Avg. %	100%	100%	100%	100%	100%	100%	100%	100%	100%	100%	100%	100%	100%	100%
Lifts Operative - Ave %	100%	100%	100%	100%	100%	100%	100%	100%	100%	100%	100%	100%	100%	100%
PM Complete on Schedule	100%	100%	100%	100%	100%	100%	100%	100%	100%	100%	100%	100%	100%	100%
Total Road Calls	17	14	13	11	15	10	7	9	16	16	14	14	10	54
Road Calls for Mechanical	13	12	9	6	12	8	6	8	10	10	8	8	9	35
Road Calls for Other	4	2	4	5	3	2	1	1	6	6	6	6	1	19
Miles Between Mechanical Road Calls														
Bus Numbers														
100 - 199	12,515	10,438	10,307	11,009	8,692	11,404	12,386	11,593	11,548	12,695	12,687	10,056	10,213	
200 - 299	12,499	36,215	37,499	37,599	30,109	37,475	33,824	34,594	15,393	33,124	33,144	12,334	15,935	
300 - 399	45,475	36,422	14,228	40,673	13,013	45,850	40,487	38,003	35,151	10,970	39,070	18,851	38,778	
400 - 499	31,240	14,296	29,763	15,639	32,087	34,365	32,424	29,208	14,098	26,066	28,085	15,046	33,258	
500 - 519	18,995	54,431	62,963	48,908	27,745	30,387	56,858	11,363	48,164	14,551	24,755	25,710	25,160	
900 - 939			3,639	11,806	17,182	23,789	70,771	77,837	42,305	31,019	73,059	77,571	25,561	<i>Bus add - 12/09</i>
2000 - 2099	18,170	16,523	10,803	16,230	14,315	18,340	16,500	15,195	8,374	17,779	7,719	19,438	17,866	
9600 - 9629	23,132	6,993	17,855	23,819	14,145									<i>Series #'s Out of Service - Mar10</i>
9800 - 9809	12,337	14,513	8,745	15,539	12,081	16,680	5,207	11,721	14,048	11,198	11,888	12,623	12,844	
Fleet Avg.	21,817	21,090	30,085	43,412	21,459	37,032	45,611	32,951	26,925	23,947	32,860	32,946	30,203	29,650
Maintenance Pay Hours	4,358	4,345	4,395	4,788	3,908	4,489	4,381	4,381	4,212	4,343	4,614	4,090	4,437	17,484
No. Maint. Employees	24	26	27	27	27	26	26	26	26	26	26	26	25	26
Maint. Emps/100K Miles	8	10	10	10	10	9	10	10	10	11	10	10	9	2
Unscheduled Absences	5	3	1	2	3	3	1	6	3	1	1	4	0	2



**MONTHLY BOARDINGS
Operations Data Summary**

OCTOBER 2010 PRODUCTIVITY

(sorted by Pass / Rev Hr - descending order)

Route	Destination Information	Total	Wkday Avg	Passenger / Rev Hr
600's	Select Service	27,102	1,291	30.6
20	DVC / Concord	26,393	1,257	27.9
4	Walnut Creek Downtown Shuttle	24,183	937	26.1
10	Concord / Clayton Rd	21,822	1,039	26.8
314	Clayton Rd / Monument Blvd / Pleasant Hill	8,837	0	21.9
15	Treat Boulevard	12,016	572	20.1
92X	Ace Shuttle Express	3,202	152	18.4
14	Monument Blvd	15,001	714	18.1
11	Treat Blvd / Oak Grove	6,680	318	17.9
17	Olivera/Solano / Salvio / North Concord	6,650	317	16.6
18	Amtrak / Merello / Pleasant Hill	9,858	469	15.8
9	DVC / Walnut Creek	13,437	640	15.4
1	Rossmoor / Shadelands	8,274	394	15.3
93X	Kirker Pass Express	3,939	188	15.1
6	Lafayette / Moraga / Orinda	10,489	447	14.7
16	Alhambra Ave / Monument Blvd	15,574	742	14.0
21	Walnut Creek / San Ramon Transit Center	13,129	625	13.8
320	DVC / Concord	1,610	0	13.1
96X	Bishop Ranch Express	8,494	404	13.1
316	Alhambra / Merello / Pleasant Hill	2,238	0	12.8
95X	San Ramon / Danville Express	2,548	121	12.1
35	Dougherty Valley	8,170	389	12.0
321	San Ramon / Walnut Creek	2,082	0	11.9
91X	Concord Commuter Express	878	42	11.7
98X	Martinez Express	7,567	360	11.2
311	Concord / Oak Grove / Treat Blvd / Walnut Creek	1,683	0	11.1
28	North Concord / Martinez	6,927	330	10.9
19	Amtrak / Pacheco Blvd / Concord	2,968	141	10.2
315	Concord / Willow Pass / Landana	683	0	10.1
36	San Ramon / Dublin	5,637	268	10.1
301	Rossmoor / John Muir Medical Center	810	0	9.8
5	Creekside / Walnut Creek	1,613	77	8.3
97X	Bishop Ranch Express	1,624	77	7.9
7	Shadelands / Pleasant Hill / Walnut Creek	4,507	215	6.7
2	Rudgear / Walnut Creek	1,110	53	6.0
6L	Orinda / Orinda Village	101	5	5.1
25	Lafayette / Walnut Creek	1,138	54	4.7
250 *	Gael Rail Service	279	9	2.7

*NOTE: * Data comes from Link Operators*

*** These are seasonal routes*

**MONTHLY BOARDINGS
Operations Data Summary**

AVERAGE WEEKDAY BOARDINGS TREND

Route	Destination Information	Jul-10	Aug-10	Sep-10	Oct-10	Nov-10	Dec-10	Jan-11	Feb-11	Mar-11	Apr-11	May-11	Jun-11
1	Rossmoor / Shadelands	412	377	385	394								
2	Rudgear / Walnut Creek	67	66	64	53								
4	Walnut Creek Downtown Shuttle	1,017	945	915	937								
5	Creekside / Walnut Creek	73	70	74	77								
6	Lafayette / Moraga / Orinda	302	340	458	447								
6L	Orinda / Orinda Village	7	2	3	5								
7	Shadelands / Pleasant Hill / Walnut Creek	237	231	231	215								
9	DVC / Walnut Creek	606	570	652	640								
10	Concord / Clayton Rd	948	947	1,016	1,039								
11	Treat Blvd / Oak Grove	287	298	332	318								
14	Monument Blvd	699	663	719	714								
15	Treat Boulevard	496	464	594	572								
16	Alhambra Ave / Monument Blvd	652	662	729	742								
17	Olivera/Solano / Salvio / North Concord	263	273	341	317								
18	Amtrak / Merello / Pleasant Hill	404	413	482	469								
19	Amtrak / Pacheco Blvd / Concord	158	140	142	141								
20	DVC / Concord	1,065	1,053	1,279	1,257								
21	Walnut Creek / San Ramon Transit Center	645	642	648	625								
25	Lafayette / Walnut Creek	40	37	57	54								
28	North Concord / Martinez	283	283	306	330								
35	Dougherty Valley	356	321	383	389								
36	San Ramon / Dublin	237	246	256	268								
91X	Concord Commuter Express	43	47	40	42								
92X	Ace Shuttle Express	148	158	148	152								
93X	Kirker Pass Express	175	174	185	188								
95X	San Ramon / Danville Express	110	113	120	121								
96X	Bishop Ranch Express	425	395	394	404								
97X	Bishop Ranch Express	70	78	75	77								
98X	Martinez Express	358	354	385	360								
250 *	St Mary's College Gael Rail Shuttle		7	9	9								
600's	Select Service	38	398	1,242	1,291								
TOTALS		10,622	10,763	12,658	12,643								

*NOTE: * Data comes from Link Operators ** These are seasonal routes*

Avg Wkdy Trend

**MONTHLY BOARDINGS
Operations Data Summary**

AVERAGE WEEKEND BOARDINGS TREND

Route	Destination Information	Jul-10	Aug-10	Sep-10	Oct-10	Nov-10	Dec-10	Jan-11	Feb-11	Mar-11	Apr-11	May-11	Jun-11
SATURDAY		<i>5 Days</i>	<i>4 Days</i>	<i>4 Days</i>	<i>5 Days</i>	<i>4 Days</i>	<i>3 Days</i>	<i>4 Days</i>	<i>4 Days</i>	<i>4 Days</i>	<i>5 Days</i>	<i>4 Days</i>	<i>4 Days</i>
4	Walnut Creek Downtown Shuttle	683	610	540	516								
6	Lafayette / Moraga / Orinda	67	88	167	136								
250 *	St Mary's College Gael Rail Shuttle	0	8	36	23								
301	Rossmoor / John Muir Medical Center	90	78	112	94								
311	Concord / Oak Grove / Treat Blvd / WC	191	206	221	184								
314	Clayton Rd / Monument Blvd / PH	1,040	1,021	1,062	1,065								
315	Concord / Willow Pass / Landana	82	74	70	92								
316	Alhambra / Merello / Pleasant Hill	291	289	300	293								
320	DVC / Concord	206	234	249	207								
321	San Ramon / Walnut Creek	272	269	284	252								
TOTALS		2,922	2,878	3,040	2,863	0	0	0	0	0	0	0	0

Route	Destination Information	Jul-10	Aug-10	Sep-10	Oct-10	Nov-10	Dec-10	Jan-11	Feb-11	Mar-11	Apr-11	May-11	Jun-11
SUNDAY		<i>4 Days</i>	<i>5 Days</i>	<i>4 Days</i>	<i>5 Days</i>	<i>4 Days</i>	<i>4 Days</i>	<i>5 Days</i>	<i>4 Days</i>	<i>4 Days</i>	<i>4 Days</i>	<i>5 Days</i>	<i>4 Days</i>
4	Walnut Creek Downtown Shuttle	420	469	457	384								
6	Lafayette / Moraga / Orinda	36	61	103	84								
250 *	St Mary's College Gael Rail Shuttle	0	10	18	17								
301	Rossmoor / John Muir Medical Center	56	68	87	68								
311	Concord / Oak Grove / Treat Blvd / WC	172	159	161	153								
314	Clayton Rd / Monument Blvd / PH	772	743	748	702								
315	Concord / Willow Pass / Landana	54	54	50	45								
316	Alhambra / Merello / Pleasant Hill	172	192	227	154								
320	DVC / Concord	91	134	122	115								
321	San Ramon / Walnut Creek	143	182	186	165								
TOTALS		1,917	2,072	2,158	1,886	0	0	0	0	0	0	0	0

*NOTE: * Data comes from Link Operators ** These are seasonal routes*

**MONTHLY BOARDINGS
Operations Data Summary**

Route #	Description
1	Rossmoor Shopping Center, Tice Valley Blvd, Boulevard Wy, Oakland Blvd, Trinity Ave , BART Walnut Creek, Ygnacio Valley, Montego, John Muir Medical Center, N Wiget Ln, Shadelands Office Park
2	Rudgear Rd, Stewart Ave, Trotter Wy, Dapplegray Rd, Palmer Rd, Mountain View Blvd, San Miguel Dr, N & S California Blvd, BART Walnut Creek
4	BART Walnut Creek, N California Blvd, Locust St, Mt Diablo Blvd, Broadway Plaza, S Main St, Pringle Ave
4H	Walnut Creek Extended Holiday Service (November 27 thru December 31)
5	BART Walnut Creek, Riviera Ave, Parkside Dr, N Civic Dr, N Broadway, Lincoln Ave, Mt Pisgah St, S Main St, Creekside Dr
6	BART Orinda, Moraga Wy, Moraga Rd, St Marys Rd, St Mary's College, Mt Diablo Blvd, BART Lafayette
6L	BART Orinda, Orinda Wy
7	BART Pleasant Hill, Treat Blvd, Bancroft Rd, Ygnacio Valley Rd, Shadelands Office Park, Marchbanks, BART Walnut Creek, Riviera Ave, Buena Vista, Geary Rd
9	DVC, Contra Costa Blvd, Ellinwood Wy, JFK University, Gregory Ln, Cleaveland Rd, Boyd Rd, W Hookston Rd, Patterson Blvd, Oak Park Blvd, Coggins Dr, BART Pleasant Hill, N Main St, N California Blvd, BART Walnut Creek
10	BART Concord, Clayton Rd, Center St, Marsh Creek Rd
11	BART Concord, Port Chicago Highway, Salvio St, Mira Vista Terrace, Fry Wy, Clayton Rd, Market St, Meadow Ln, Oak Grove Rd, Treat Blvd, BART Pleasant Hill
14	BART Concord, Oak St, Laguna St, Detroit Ave, Monument Blvd, Mohr Ln, David Ave, Bancroft Rd, Treat Blvd, BART Pleasant Hill
15	BART Concord, Port Chicago Highway, Salvio St, Parkside Dr, Willow Pass Rd, Landana Dr, West St, Clayton Rd, Treat Blvd, BART Pleasant Hill, Oak Rd, N Civic Dr, Ygnacio Valley Rd, BART Walnut Creek
16	BART Concord, Oak St, Galindo St, Monument Blvd, Crescent Plaza, Cleaveland Rd, Gregory Ln, Pleasant Hill Rd, Alhambra Ave, Berrellesa St, Escobar St, Court St, Martinez Amtrak
17	BART Concord, Grant St, East St, Solano Wy, Olivera Rd, Port Chicago Highway, BART North Concord
18	BART Pleasant Hill, Oak Rd, Buskirk Ave, Crescent Plaza, Gregory Ln, Pleasant Hill Rd, Taylor Blvd, Morello Ave, Viking Dr, Contra Costa Blvd, DVC, Old Quarry Rd, Pacheco Blvd, Muir Rd, Arnold Dr, Morello, Pacheco Blvd, Martinez Amtrak
19	BART Concord, Galindo St, Concord Ave, Bisso Ln, Stanwell Dr, John Glenn Dr, Galaxy Wy, Diamond Blvd, Contra Costa Blvd, Pacheco Blvd, Martinez Amtrak
20	BART Concord, Grant St, Concord Blvd, Clayton Rd, Gateway Blvd, Willow Pass Rd, Sun Valley Blvd, Golf Club Rd, DVC
21	BART Walnut Creek, N & S California Blvd, Newell Ave, S Main St, Danville Blvd, Railroad Ave, San Ramon Valley Blvd, Danville Park & Ride, Camino Ramon, Fostoria Wy, San Ramon Transit Center
25	BART Lafayette, Mt Diablo Blvd, Highway 24, Highway 680, BART Walnut Creek
28	BART North Concord, Port Chicago Highway, Bates Ave, Commercial Cir, Pike Ln, Arnold Industrial Wy, Marsh Dr, Contra Costa Blvd, Chilpancinco Pkwy, Old Quarry Rd, DVC, Highway 680, Highway 4, Center Ave, VA Clinic, Howe Rd, Pacheco Blvd, Martinez Amtrak
35	BART Dublin, Dublin Blvd, Dougherty Rd, Bollinger Canyon Rd, E Branch Pkwy, Windemere Pkwy, Sunset Dr, Bishop Dr, Executive Pkwy, San Ramon Transit Center
36	BART Dublin, Dublin Blvd, Village Pkwy, Alcosta Blvd, Fircrest Ln, San Ramon Valley Blvd, Tareyton Ave, Bollinger Canyon Rd, Crow Canyon Rd, Executive Pkwy, San Ramon Transit Center
91X	BART Concord, Galindo St, Concord Ave, John Glenn Dr, Galaxy Wy, Chevron, Diamond Blvd, Willow Pass Rd, Gateway Blvd, Clayton Rd, Oak St
92X	Shadelands Office Park, Ygnacio Valley Rd, Highway 680, Danville Park & Ride, Crow Canyon Rd, Bishop Ranch 15, San Ramon Transit Center, Camino Ramon, ATT, Sunset Dr, Chevron, Ace Train Station Pleasanton
93X	BART Walnut Creek, Ygnacio Valley Rd, Shadelands Office Park, Oak Grove Rd, Kirker Pass Rode, Railroad Ave, Buchanan Rd, Somersville Rd, Fairview Dr, Delta Fair Blvd, Highway 4, Hillcrest Park & Ride
95X	BART Walnut Creek, Highway 680, Crow Canyon Pl, Fostoria Wy, Camino Ramon, San Ramon Transit Center
96X	BART Walnut Creek, Highway 680, Chevron, Bishop Ranch 1, Bishop Ranch 3, Bishop Ranch 6, San Ramon Transit Center, Bishop Ranch 15, Annabel Ln, Bishop Ranch 8, Bishop Dr, Sunset Dr
97X	BART Dublin, Highway 680, Highway 580, Chevron, Bishop Ranch 1, Bishop Ranch 3, Bishop Ranch 6, San Ramon Transit Center, Bishop Ranch 15, Annabel Ln, Bishop Ranch 8, Bishop Dr, Sunset Dr
98X	BART Walnut Creek, N Main St, Highway 680, Sun Valley Blvd, Contra Costa Blvd, Concord Ave, Diamond Blvd., Highway 680, Highway 4, Alhambra Ave, Berrellesa St, Escobar St, Court St, Martinez Amtrak
250	St Mary's College, St Marys Rd, Moraga Rd, Mt Diablo Blvd, BART Lafayette

**MONTHLY BOARDINGS
Operations Data Summary**

Route #	Description
301	Rossmoor Shopping Center, Tice Valley Blvd, Boulevard Wy, Oakland Blvd, Trinity Ave , BART Walnut Creek, Ygnacio Valley, Montego, John Muir Medical Center
311	BART Concord, Port Chicago Highway, Salvio St, Mira Vista Terrace, Fry Wy, Clayton Rd, Market St, Meadow Ln, Oak Grove Rd, Treat Blvd, BART Pleasant Hill
314	Ayers Rd, Concord Blvd, Kirker Pass Rd, Clayton Rd, BART Concord, Oak St, Laguna St, Detroit Ave, Monument Blvd, Mohr Ln, David Ave, Crescent Plaza, Cleaveland Rd, Gregory Ln, Contra Costa Blvd, DVC
315	BART Concord, Port Chicago Highway, Salvio St, Parkside Dr, Willow Pass Rd, Landana Dr, West St, Clayton Rd
316	BART Pleasant Hill, Oak Rd, Buskirk Ave, Crescent Plaza, Gregory Ln, Contra Costa Blvd, Golf Club Rd, DVC, Old Quarry Rd, Pacheco Blvd, Muir Rd, Arnold Dr, Pacheco Blvd, Morrelo Ave, Martinez Amtrak, Berrellesa St, Alhambra Ave
320	BART Concord, Grant St, Concord Blvd, Clayton Rd, Gateway Blvd, Willow Pass Rd, Diamond Blvd, Concord Ave, Chilpancinco Pkwy, Old Quarry Rd, DVC
321	BART Walnut Creek, N & S California Blvd, Newell Ave, S Main St, Danville Blvd, Railroad Ave, San Ramon Valley Blvd, Camino Ramon, Fostoria Wy, San Ramon Transit Center- Shops at BR.
601	N Civic Dr, Parkside Dr, Riveria Ave, BART Walnut Creek, Trinity Ave, Oakland Blvd, Boulevard Wy, Tice Valley Blvd, Meadow Rd, Castle Hill Rd, Danville Blvd, Hillgrade Ave., Crest Ave, Rossmoor Shopping Center
602	Walnut Blvd, Oro Valley Cir, Mountain View Blvd, Rudgear Rd, Stewart Ave, Trotter Wy, Dapplegray Rd, Palmer Rd, Mountain View Blvd, San Miguel Dr, N & S California Blvd, BART Walnut Creek
603	Camino Pablo, Moraga Rd, St Marys Rd, St Mary's College, Mt Diablo Blvd, BART Lafayette
605	N Civic Dr, N Broadway, Lincoln Ave, Mt Pisgah St, Newell Ave, Lilac Dr, S Main St, Creekside Dr
606	BART Orinda, Orinda Wy, Miner Rd, Honey Hill Rd, Via Las Cruces, Saint Stephens Dr, Orinda Woods Dr, Moraga Wy, Ivy Dr, Moraga Rd, St Marys Rd, St Mary's College, Mt Diablo Blvd, BART Lafayette
607	BART Pleasant Hill, Treat Blvd, Bancroft Rd, Ygnacio Valley Rd, Oak Grove Rd, Walnut Ave
608	VA Clinic, Center Ave, Pacheco Blvd, Contra Costa Blvd, Chilpancinco Pkwy, Old Quarry Rd, DVC
609	BART Walnut Creek, Ygnacio Valley Rd, Marchbanks Dr, Walnut Ave
610	BART Concord, Clayton Rd, Ayers Rd, Concord Blvd, Kirkwood Dr, Oakhurst Dr, Center St, Marsh Creek Rd, Mountaire Pkwy, Mountaire Cir
611	BART Concord, Port Chicago Highway, Salvio St, Mira Vista Terrace, Fry Wy, Clayton Rd, Market St, Meadow Ln, Oak Grove Rd, Treat Blvd, Bancroft Rd, Minert Rd
612	BART Concord, Clayton Rd, Ayers Rd, Concord Blvd, Kirker Pass Rd, Washington Blvd, Pennsylvania Blvd, Pine Hollow Rd, El Camino Dr, Michigan Blvd
613	Minert Rd, Oak Grove Rd, Monument Blvd, Detroit Ave, Laguna St, Oak St, BART Concord
614	BART Concord, Clayton Rd, Michigan Blvd, Pennsylvania Blvd, Pine Hollow Rd, El Camino Dr
615	Concord Blvd, Landana Dr., Willow Pass Rd., Parkside Dr., Salvio St., East St., clayton Rd., Oakland Ave., Mount Diablo St., BART Concord
616	Treat Blvd, Bancroft Rd, Minert Rd, Oak Grove Rd, Monument Blvd, San Miguel Rd, Galindo St, Oak St, BART Concord
619	Minert Rd, Oak Grove Rd, Monument Blvd, Mohr Ln, David Ave, Bancroft Rd, Treat Blvd, BART Pleasant Hill
622	Pine Valley Rd, Broadmoor Dr, Montevideo Dr, Alcosta Blvd, Crow Canyon Rd, Tassajara Ranch Rd, Camino Tassajara
623	Danville Blvd, Stone Valley Rd, Green Valley Rd, Diablo Rd, Hartz Ave, San Ramon Valley Blvd, Sycamore Valley Rd, Camino Tassajara, Tassajara Ranch Rd, Crow Canyon Rd, Anabel Ln
625	Rossmoor Shopping Center, Tice Valley Blvd, Olympic Blvd, Pleasant Hill Rd, Acalanes Ave, Stanley Blvd, Mt Diablo Blvd, BART Lafayette, Happy Valley Rd, Upper Happy Valley Rd, El Nido Ranch Rd, Hidden Valley Rd, Acalanes Rd
626	St Mary's College, St Marys Rd, Rohrer Dr, Moraga Rd, Mt Diablo Blvd, BART Lafayette, Happy Valley Rd, Upper Happy Valley Rd, El Nido Ranch Rd, Hidden Valley Rd, Acalanes Rd
627	BART North Concord, Port Chicago Highway, Bates Ave, Mason Cir
635	Bollinger Canyon Rd, Dougherty Rd, Crow Canyon Rd, Tassajara Ranch Rd, Camino Tassajara, Lusitano St, Charbray St
636	San Ramon Transit Center, Executive Pkwy, Crow Canyon Rd, Bollinger Canyon Rd, San Ramon Valley Blvd, Broadmoor Dr, Alcosta Blvd, Fircrest Ln, Village Pkwy, Dublin Blvd, BART Dublin