

## Agenda Item 7.a

**TO:** O&S Committee

**DATE:** May 17, 2012

**FROM:** Anne Muzzini  
Director of Planning & Marketing

**SUBJ:** Fixed Route Reports

### Fixed Route Operating Reports for April 2012

#### 1. Monthly Boarding's Data

The following represent the numbers that are most important to staff in evaluating the performance of the fixed route system.

	FY 2012		
<u>Title</u>	<u>Current Month</u>	<u>YTD Avg</u>	<u>Annual Goal</u>
Total Passengers	258,198		
Average Weekday	11,210	11,448	
Pass/Rev Hour	14.7	15.5	FY11 Goal > 17.0
Missed Trips	0.03%	0.10%	FY11 Goal < 0.25%
Miles between Road Calls	66,788	31,514	FY11 Goal > 18,000

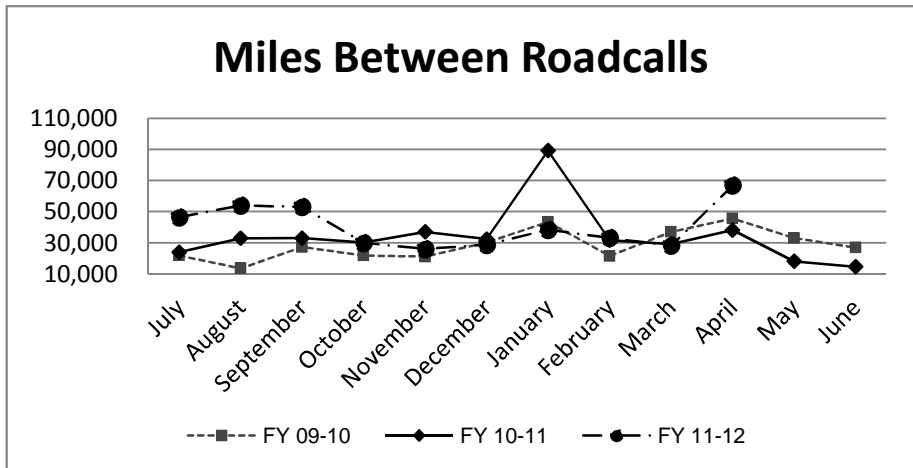
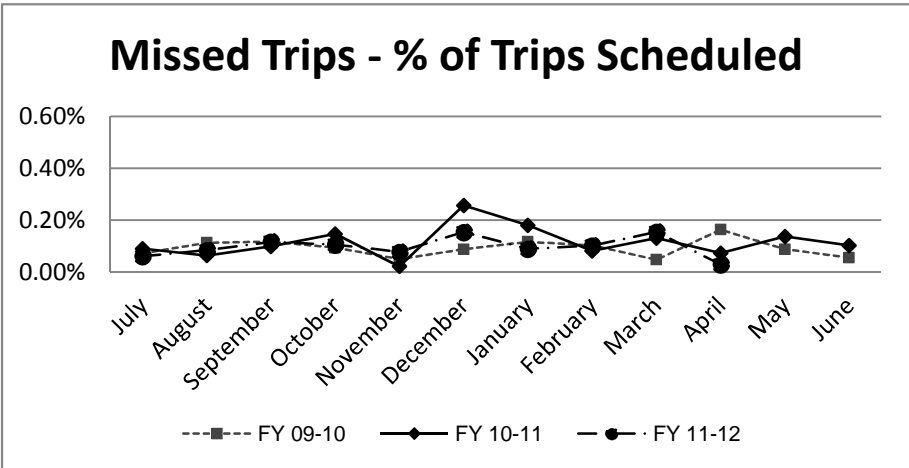
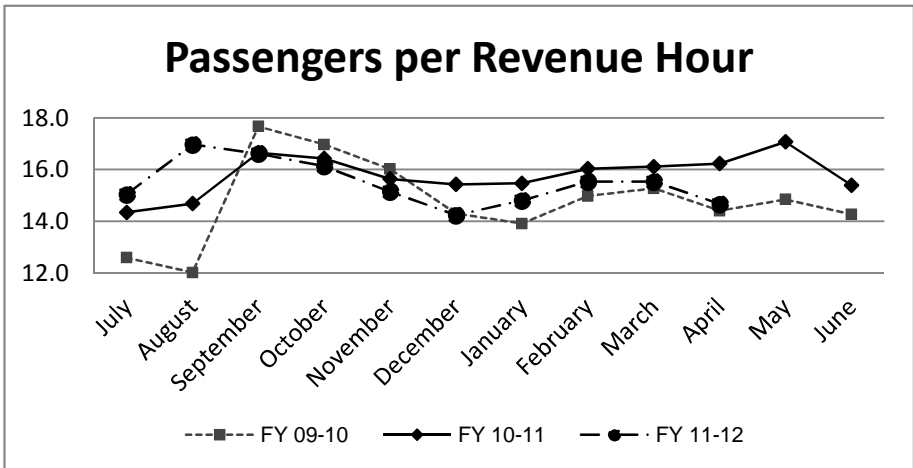
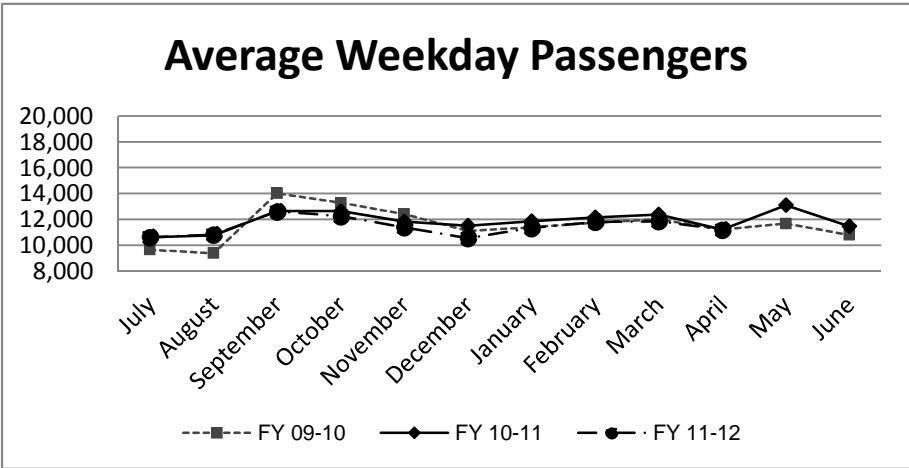
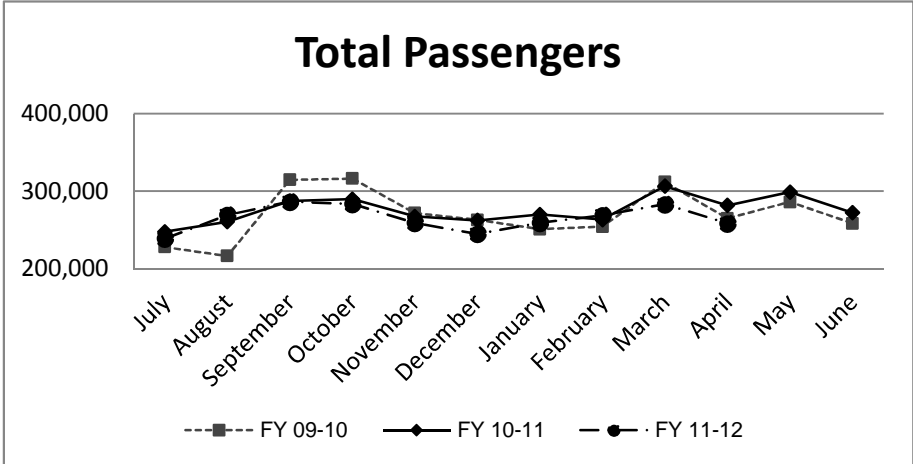
\* Based on Standards from updated SRTP

#### Analysis

Average weekday ridership is lower in April (11,210 passengers) from March (11,867 passengers). Productivity in April is slightly lower at 14.7 passengers per hour from the March's 15.5 passengers per hour.

The percentage of missed trips in April is (0.03%) as compared to the prior month (March = 0.15%). The YTD average is 0.10% missed trips.

The number of miles between roadcalls was equal to 66,788 miles in April which is higher than the prior month when we experienced 28,116 miles between roadcalls. The year to date average is 31,514 miles between roadcalls.



**TRANSPORTATION and MAINTANCE  
Operation Data Summary**

<b>TRANSPORTATION</b>	<b>2011 April</b>	<b>2011 May</b>	<b>2011 June</b>	<b>2011 July</b>	<b>2011 August</b>	<b>2011 September</b>	<b>2011 October</b>	<b>2011 November</b>	<b>2011 December</b>	<b>2012 January</b>	<b>2012 February</b>	<b>2012 March</b>	<b>2012 April</b>	<b>13 Month TOTALS</b>	
Number of Buses	131	131	131	121	121	121	121	121	121	121	121	121	121	123	
Totals Hub Miles	266,823	270,960	262,262	231,807	269,721	264,940	269,092	260,169	258,233	267,933	264,761	281,156	267,150	3,435,007	
<b>Work Days</b>	30	30	30	30	31	29	31	29	30	30	29	31	30	390	
Revenue Hours	17,344	17,485	17,635	15,865	18,119	17,221	17,566	17,081	17,178	17,455	17,293	18,220	17,602	226,064	
Operator Pay Hours	30,644	31,483	29,272	30,344	31,047	30,692	29,729	29,324	34,775	32,316	29,839	31,195	30,306	370,660	
Number of Operators	162	166	165	165	162	162	162	162	165	165	160	164	162	163	
<b>Unscheduled Absences</b>	<b>296</b>	<b>314</b>	<b>295</b>	<b>428</b>	<b>286</b>	<b>337</b>	<b>197</b>	<b>303</b>	<b>354</b>	<b>461</b>	<b>402</b>	<b>420</b>	<b>412</b>	<b>4,505</b>	
FT Protection	20	53	42	60	67	42	34	53	48	85	45	53	50	652	
Worker Comp.	84	88	90	61	74	82	109	115	98	123	144	109	113	1,290	
Sick leave	192	173	163	307	145	213	54	135	208	253	213	258	249	2,563	
<b>Collision Accidents</b>	6	7	5	6	6	7	5	6	6	3	4	4	2	67	
Passenger Accidents	10	13	6	15	5	9	17	12	7	9	11	13	11	138	
Total Chargeable Collisions	1	1	4	2	4	3	1	4	3	1	4	1	2	31	
<b>Chargeable/100K Miles</b>	<b>0.37</b>	<b>0.36</b>	<b>1.52</b>	<b>0.86</b>	<b>1.48</b>	<b>1.13</b>	<b>0.37</b>	<b>1.53</b>	<b>1.16</b>	<b>0.37</b>	<b>1.51</b>	<b>0.35</b>	<b>0.74</b>	<b>0.90</b>	
Number of Trips Scheduled	23,455	23,455	23,503	21,500	23,878	23,255	23,739	23,256	22,740	23,581	23,581	24,600	23,581	304,124	
Number of Trips Missed	17	32	24	13	20	27	25	18	35	21	24	38	7	301	
<b>Of Trips Scheduled - % Missed</b>	<b>0.07%</b>	<b>0.14%</b>	<b>0.10%</b>	<b>0.06%</b>	<b>0.08%</b>	<b>0.12%</b>	<b>0.11%</b>	<b>0.08%</b>	<b>0.15%</b>	<b>0.09%</b>	<b>0.10%</b>	<b>0.15%</b>	<b>0.03%</b>	<b>0.10%</b>	
Of Trips Missed - Mechanical	5	15	22	8	6	16	14	13	7	7	13	20	3	149	
On Time Performance %	95%	93%	94%	93%	93%	91%	90%	95%	94%	94%	96%	90%	90%	93%	
<b>MAINTENANCE</b>															
A/C Operative - Avg. %	100%	100%	100%	100%	100%	100%	100%	100%	100%	100%	100%	100%	100%	100%	
Lifts Operative - Ave %	100%	99%	100%	100%	100%	100%	100%	100%	100%	100%	100%	100%	100%	100%	
PM Complete on Schedule	100%	100%	100%	100%	100%	100%	100%	100%	100%	100%	100%	100%	100%	100%	
Total Road Calls	10	19	26	7	8	12	9	14	15	9	13	15	6	163	
Road Calls for Mechanical	7	15	18	5	5	5	6	10	9	7	8	10	4	109	
<b>Road Calls for Other</b>	<b>3</b>	<b>4</b>	<b>8</b>	<b>2</b>	<b>3</b>	<b>7</b>	<b>3</b>	<b>4</b>	<b>6</b>	<b>2</b>	<b>5</b>	<b>5</b>	<b>2</b>	<b>54</b>	
<b>Miles Between Mechanical Road Calls</b>															
Bus Numbers															
100 - 199	11,024	12,606	13,156	10,504	10,451	11,933	11,714	10,034	7,925	9,375	11,781	11,930	11,249	Bus add - 12/09  Out of Service July 2011	
200 - 299	27,689	29,211	17,089	30,673	32,912	33,165	11,770	28,653	31,222	34,037	30,338	33,067	32,494		
300 - 399	37,475	16,592	5,601	31,636	12,167	34,484	18,219	20,226	13,142	22,031	11,844	6,224	40,903		
400 - 499	33,259	35,114	12,787	25,113	31,447	8,414	31,903	30,953	17,596	15,892	30,471	36,198	31,581		
500 - 519	47,902	7,117	16,015	42,248	51,277	49,334	49,376	23,634	15,928	50,808	26,619	52,607	52,074		
900 - 939	43,507	45,641	87,974	77,156	90,065	87,870	90,495	23,475	90,839	86,996	45,332	48,365	8,643		
2000 - 2099	13,806	11,722	3,881	14,477	17,068	14,499	13,855	8,910	5,846	10,873	12,736	13,282	11,936		
9800 - 9809	8,654	7,994	9,806												
Fleet Avg.	38,118	18,064	14,570	46,361	53,944	52,988	29,899	26,017	28,693	38,276	33,095	28,116	66,788		31,514
Maintenance Pay Hours	4,154	4,067	3,897	3,976	4,093	3,744	4,086	4,160	4,418	4,762	4,457	4,581	4,311		54,705
No. Maint. Employees	26	25	24	25	23	24	22	26	27	27	27	26	26	25	
<b>Maint. Emps/100K Miles</b>	<b>10</b>	<b>9</b>	<b>9</b>	<b>11</b>	<b>9</b>	<b>9</b>	<b>8</b>	<b>10</b>	<b>10</b>	<b>10</b>	<b>10</b>	<b>9</b>	<b>10</b>	<b>1</b>	
Unscheduled Absences	5	1	0	1	2	3	1	3	1	2	1	7	1	2	

Note: Some statistics may not be available (n/a) at this time. These will be brought current in future reports.

**MONTHLY BOARDINGS**  
**Operations Data Summary**

Fixed Route Boardings		Passengers by Revenue Hrs/Miles		Service Days		Fiscal YTD Comparison Passenger Boardings	
<b>April 2012 - Fixed Route Boardings</b>	<b>258,198</b>	Revenue Hours - April 12	17,602	Weekdays - April 12	21	Fiscal 2012 YTD	2,648,761
Bus Bridge		April 11	17,344	April 11	21		
Special Event		Revenue Miles - April 12	195,428	Saturdays - April 12	4	Fiscal 2011 YTD	2,734,078
		April 11	189,870	April 11	5		
				Sundays - April 12	5		
				April 11	4		
<b>April 2012 Total Boardings</b>	<b>258,198</b>	<b>Passengers per Mile</b>	<b>1.3</b>	<b>Total Days - 2012</b>	<b>30</b>	<b>YTD Trend</b>	<b>(3.1%)</b>
<b>April 2011 Total Boardings</b>	<b>281,454</b>	<b>Passengers per Hour</b>	<b>14.67</b>	<b>2011</b>	<b>30</b>	<b>Monthly Trend</b>	<b>(8.3%)</b>

April 2012 Fixed Route Passenger Total						April 2012	April 2012
Route	Destination Information	Weekday	Saturday	Sunday	Total	Weekday Average	Passengers per Revenue Hour
1	Rossmoor / Shadelands	7,906			7,906	376	14.6
2	Rudgear / Walnut Creek	1,239			1,239	59	6.6
4	Walnut Creek Downtown Shuttle	17,879	2,884	2,562	23,324	851	25.4
5	Creekside / Walnut Creek	1,000			1,000	48	4.8
6	Lafayette / Moraga / Orinda	8,714	485	396	9,595	415	13.3
7	Shadelands / Pleasant Hill / Walnut Creek	4,833			4,833	230	7.2
9	DVC / Walnut Creek	10,954			10,954	522	12.6
10	Concord / Clayton Rd	20,054			20,054	955	24.7
11	Treat Blvd / Oak Grove	6,101			6,101	291	16.3
14	Monument Blvd	12,599			12,599	600	15.2
15	Treat Boulevard	9,428			9,428	449	15.7
16	Alhambra Ave / Monument Blvd	14,384			14,384	685	13.2
17	Olivera/Solano / Salvio / North Concord	4,315			4,315	205	11.1
18	Amtrak / Merello / Pleasant Hill	8,627			8,627	411	13.2
19	Amtrak / Pacheco Blvd / Concord	2,789			2,789	133	9.6
20	DVC / Concord	22,639			22,639	1,078	23.2
21	Walnut Creek / San Ramon Transit Center	12,003			12,003	572	11.7
25	Lafayette / Walnut Creek	1,213			1,213	58	5.0
28	North Concord / Martinez	4,187			4,187	199	6.6
35	Dougherty Valley	6,336			6,336	302	9.3
36	San Ramon / Dublin	4,906			4,906	234	8.8
91X	Concord Commuter Express	713			713	34	9.5
92X	Ace Shuttle Express	3,120			3,120	149	17.9
93X	Kirker Pass Express	4,403			4,403	210	17.3
95X	San Ramon / Danville Express	3,817			3,817	182	18.1
96X	Bishop Ranch Express	10,105			10,105	481	15.4
97X	Bishop Ranch Express	2,087			2,087	99	10.1
98X	Martinez Express	7,097			7,097	338	12.7
250 *	Gael Rail Service	117	141	83	341	12	2.2
260 *	Cal State East Bay / Concord Bart	82			82	6	1.3
301	Rossmoor / John Muir Medical Center		284	241	524	0	6.5
310	Concord Bart / Clayton Rd / Kirker Pass		1,493	1,404	2,897	0	23.8
311	Concord / Oak Grove / Treat Blvd / WC		940	865	1,806	0	13.2
314	Clayton Rd / Monument Blvd / PH		2,607	2,231	4,838	0	19.7
315	Concord / Willow Pass / Landana		232	196	428	0	7.1
316	Alhambra / Merello / Pleasant Hill		1,296	1,037	2,333	0	14.9
320	DVC / Concord		961	701	1,661	0	14.2
321	San Ramon / Walnut Creek		962	790	1,753	0	11.1
600's	Select Service	21,758			21,758	1,036	24.4
<b>TOTALS</b>		<b>235,407</b>	<b>12,285</b>	<b>10,506</b>	<b>258,198</b>	<b>11,210</b>	<b>14.7</b>

\* Data from Link    \*\* Seasonal Route

## Operations Data Summary

### APRIL 2012 PRODUCTIVITY

*(sorted by Pass / Rev Hr - descending order)*

Route	Destination Information	Total	Wkday Avg	Passenger / Rev Hr
4	Walnut Creek Downtown Shuttle	23,324	851	25.4
10	Concord / Clayton Rd	20,054	955	24.7
600's	Select Service	21,758	1,036	24.4
310	Concord Bart / Clayton Rd / Kirker Pass	2,897		23.8
20	DVC / Concord	22,639	1,078	23.2
314	Clayton Rd / Monument Blvd / Pleasant Hill	4,838		19.7
95X	San Ramon / Danville Express	3,817	182	18.1
92X	Ace Shuttle Express	3,120	149	17.9
93X	Kirker Pass Express	4,403	210	17.3
11	Treat Blvd / Oak Grove	6,101	291	16.3
15	Treat Boulevard	9,428	449	15.7
96X	Bishop Ranch Express	10,105	481	15.4
14	Monument Blvd	12,599	600	15.2
316	Alhambra / Merello / Pleasant Hill	2,333		14.9
1	Rossmoor / Shadelands	7,906	376	14.6
320	DVC / Concord	1,661		14.2
6	Lafayette / Moraga / Orinda / Orinda Village	9,595	415	13.3
311	Concord / Oak Grove / Treat Blvd / Walnut Creek	1,806		13.2
18	Amtrak / Merello / Pleasant Hill	8,627	411	13.2
16	Alhambra Ave / Monument Blvd	14,384	685	13.2
98X	Martinez Express	7,097	338	12.7
9	DVC / Walnut Creek	10,954	522	12.6
21	Walnut Creek / San Ramon Transit Center	12,003	572	11.7
321	San Ramon / Walnut Creek	1,753		11.1
17	Olivera/Solano / Salvio / North Concord	4,315	205	11.1
97X	Bishop Ranch Express	2,087	99	10.1
19	Amtrak / Pacheco Blvd / Concord	2,789	133	9.6
91X	Concord Commuter Express	713	34	9.5
35	Dougherty Valley	6,336	302	9.3
36	San Ramon / Dublin	4,906	234	8.8
7	Shadelands / Pleasant Hill / Walnut Creek	4,833	230	7.2
315	Concord / Willow Pass / Landana	428		7.1
2	Rudgear / Walnut Creek	1,239	59	6.6
28	North Concord / Martinez	4,187	199	6.6
301	Rossmoor / John Muir Medical Center	524		6.5
25	Lafayette / Walnut Creek	1,213	58	5.0
5	Creekside / Walnut Creek	1,000	48	4.8
250 *	Gael Rail Service	341	12	2.2
260 *	Cal State East Bay / Concord Bart	82	6	1.3

NOTE: \* Data comes from Link Operators

\*\* These are seasonal routes

**Operations Data Summary**

**AVERAGE WEEKDAY BOARDINGS TREND**

<b>Route</b>	<b>Destination Information</b>	<b>Apr-11</b>	<b>May-11</b>	<b>Jun-11</b>	<b>Jul-11</b>	<b>Aug-11</b>	<b>Sep-11</b>	<b>Oct-11</b>	<b>Nov-11</b>	<b>Dec-11</b>	<b>Jan-12</b>	<b>Feb-12</b>	<b>Mar-12</b>	<b>Apr-12</b>
1	Rossmoor / Shadelands	422	399	393	393	365	368	361	355	330	354	359	381	376
2	Rudgear / Walnut Creek	67	68	56	62	61	64	70	60	50	56	65	60	59
4	Walnut Creek Downtown Shuttle	920	909	948	993	949	960	905	904	919	869	895	919	851
4H **	Walnut Creek Extended Holiday Shuttle								4	32	0	0	0	0
5	Creekside / Walnut Creek	76	76	76	73	65	70	73	63	69	46	67	63	48
6	Lafayette / Moraga / Orinda	375	406	307	308	325	513	498	467	364	455	462	466	415
7	Shadelands / Pleasant Hill / Walnut Creek	220	226	231	233	224	217	210	205	193	231	218	232	230
9	DVC / Walnut Creek	591	679	658	589	610	602	602	563	490	519	554	554	522
10	Concord / Clayton Rd	1,046	1,112	1,034	948	941	1,079	1,046	978	973	928	985	984	955
11	Treat Blvd / Oak Grove	329	345	273	254	272	330	307	309	284	297	316	317	291
14	Monument Blvd	644	714	661	661	586	639	635	595	567	596	598	599	600
15	Treat Boulevard	557	589	488	462	420	519	502	471	433	466	473	471	449
16	Alhambra Ave / Monument Blvd	738	865	842	745	678	745	711	645	634	661	684	689	685
17	Olivera/Solano / Salvio / North Concord	275	285	243	248	228	247	228	203	199	197	207	210	205
18	Amtrak / Merello / Pleasant Hill	450	474	418	402	428	490	469	430	376	399	447	437	411
19	Amtrak / Pacheco Blvd / Concord	151	161	146	153	148	153	147	131	119	136	137	120	133
20	DVC / Concord	1,135	1,270	1,108	1,037	1,155	1,242	1,205	1,154	1,040	952	1,204	1,165	1,078
21	Walnut Creek / San Ramon Transit Center	629	695	656	598	571	633	626	588	556	625	588	594	572
25	Lafayette / Walnut Creek	49	52	53	54	47	54	56	56	52	57	50	58	58
28	North Concord / Martinez	287	324	302	271	294	323	287	298	274	296	312	297	199
35	Dougherty Valley	384	401	356	341	313	377	350	334	322	353	363	362	302
36	San Ramon / Dublin	262	263	249	244	227	261	274	228	224	237	251	239	234
91X	Concord Commuter Express	43	43	44	43	41	40	34	33	34	30	39	27	34
92X	Ace Shuttle Express	184	186	204	181	188	189	177	186	150	183	160	158	149
93X	Kirker Pass Express	223	217	202	178	196	198	207	198	178	203	203	210	210
95X	San Ramon / Danville Express	182	185	177	169	163	177	176	163	163	169	182	179	182
96X	Bishop Ranch Express	495	495	514	502	462	477	483	451	436	498	495	529	481
97X	Bishop Ranch Express	102	114	95	110	103	107	98	82	83	85	87	95	99
98X	Martinez Express	352	360	338	329	322	338	340	320	316	327	360	336	338
250 *	St Mary's College Gael Rail Shuttle	8	9			3	15	14	16	9	12	14	16	12
260 *	Cal State East Bay / Concord Bart							5	4	2	7	4	2	6
600's	Select Service	1,087	1,180	400	41	443	1,194	1,161	910	684	1,075	1,049	1,108	1,036
<b>TOTALS</b>		<b>12,279</b>	<b>13,095</b>	<b>11,469</b>	<b>10,625</b>	<b>10,825</b>	<b>12,615</b>	<b>12,246</b>	<b>11,394</b>	<b>10,549</b>	<b>11,311</b>	<b>11,817</b>	<b>11,867</b>	<b>11,210</b>

*NOTE: \* Data comes from Link Operators    \*\* These are seasonal routes*

**Operations Data Summary**

**AVERAGE WEEKEND BOARDINGS TREND**

<b>Route</b>	<b>Destination Information</b>	<b>Apr-11</b>	<b>May-11</b>	<b>Jun-11</b>	<b>Jul-11</b>	<b>Aug-11</b>	<b>Sep-11</b>	<b>Oct-11</b>	<b>Nov-11</b>	<b>Dec-11</b>	<b>Jan-12</b>	<b>Feb-12</b>	<b>Mar-12</b>	<b>Apr-12</b>
<b>SATURDAY</b>		<i>5 Days</i>	<i>4 Days</i>	<i>4 Days</i>	<i>5 Days</i>	<i>4 Days</i>	<i>4 Days</i>	<i>5 Days</i>	<i>4 Days</i>	<i>5 Days</i>	<i>4 Days</i>	<i>4 Days</i>	<i>5 Days</i>	<i>5 Days</i>
4	Walnut Creek Downtown Shuttle	600	540	513	568	607	582	536	541	501	556	620	538	577
4H **	Walnut Creek Extended Holiday Shuttle								16	69				
6	Lafayette / Moraga / Orinda	145	136	101	93	60	168	149	124	115	148	122	116	97
250 *	St Mary's College Gael Rail Shuttle	14	13			3	61	42	30	21	33	30	35	28
301	Rossmoor / John Muir Medical Center	97	79	82	112	79	79	95	72	74	80	80	67	57
310	Concord Bart / Clayton Rd / Kirker Pass				0	415	421	435	407	389	395	418	362	299
311	Concord / Oak Grove / Treat Blvd / WC	218	236	218	229	229	208	217	200	216	230	258	206	188
314	Clayton Rd / Monument Blvd / PH	1,142	1,145	1,078	1,139	601	644	659	611	636	561	648	573	521
315	Concord / Willow Pass / Landana	93	79	57	78	74	65	66	82	77	63	77	68	46
316	Alhambra / Merello / Pleasant Hill	332	349	287	331	297	334	307	300	290	259	329	316	259
320	DVC / Concord	224	237	221	277	263	239	216	193	224	209	233	196	192
321	San Ramon / Walnut Creek	278	272	238	267	270	263	282	223	228	231	249	217	192
<b>TOTALS</b>		<b>3,142</b>	<b>3,087</b>	<b>2,796</b>	<b>3,094</b>	<b>2,899</b>	<b>3,062</b>	<b>3,004</b>	<b>2,798</b>	<b>2,839</b>	<b>2,764</b>	<b>3,064</b>	<b>2,694</b>	<b>2,457</b>

<b>Route</b>	<b>Destination Information</b>	<b>Apr-11</b>	<b>May-11</b>	<b>Jun-11</b>	<b>Jul-11</b>	<b>Aug-11</b>	<b>Sep-11</b>	<b>Oct-11</b>	<b>Nov-11</b>	<b>Dec-11</b>	<b>Jan-12</b>	<b>Feb-12</b>	<b>Mar-12</b>	<b>Apr-12</b>
<b>SUNDAY</b>		<i>4 Days</i>	<i>5 Days</i>	<i>4 Days</i>	<i>5 Days</i>	<i>4 Days</i>	<i>4 Days</i>	<i>5 Days</i>	<i>4 Days</i>	<i>4 Days</i>	<i>5 Days</i>	<i>4 Days</i>	<i>4 Days</i>	<i>4 Days</i>
4	Walnut Creek Downtown Shuttle	341	422	402	416	424	459	423	414	431	401	425	488	640
6	Lafayette / Moraga / Orinda	87	96	49	63	91	122	143	127	82	91	95	90	99
250 *	St Mary's College Gael Rail Shuttle	8	7			2	29	22	20	14	21	25	26	21
301	Rossmoor / John Muir Medical Center	58	63	62	59	63	67	68	38	43	55	50	47	60
310	Concord Bart / Clayton Rd / Kirker Pass					339	329	324	298	309	287	312	311	351
311	Concord / Oak Grove / Treat Blvd / WC	131	169	163	181	170	188	179	156	167	149	167	193	216
314	Clayton Rd / Monument Blvd / PH	763	807	767	770	424	447	469	437	531	412	410	423	558
315	Concord / Willow Pass / Landana	67	55	44	80	54	46	48	53	58	31	57	44	49
316	Alhambra / Merello / Pleasant Hill	197	265	215	227	256	245	222	188	240	208	229	200	259
320	DVC / Concord	142	148	138	141	149	135	147	136	137	138	149	125	175
321	San Ramon / Walnut Creek	176	205	178	187	167	170	188	179	173	162	160	167	198
<b>TOTALS</b>		<b>1,971</b>	<b>2,237</b>	<b>2,017</b>	<b>2,123</b>	<b>2,139</b>	<b>2,237</b>	<b>2,235</b>	<b>2,045</b>	<b>2,183</b>	<b>1,956</b>	<b>2,078</b>	<b>2,115</b>	<b>2,627</b>

NOTE: \* Data comes from Link Operators      \*\* These are seasonal routes

## Route Description Summary

Route #	Description
1	Rossmoor Shopping Center, Tice Valley Blvd, Boulevard Wy, Oakland Blvd, Trinity Ave , BART Walnut Creek, Ygnacio Valley, Montego, John Muir Medical Center, N Wiget Ln, Shadelands Office Park
2	Rudgear Rd, Stewart Ave, Trotter Wy, Dapplegray Rd, Palmer Rd, Mountain View Blvd, San Miguel Dr, N & S California Blvd, BART Walnut Creek
4	BART Walnut Creek, N California Blvd, Locust St, Mt Diablo Blvd, Broadway Plaza, S Main St, Pringle Ave
4H	Walnut Creek Extended Holiday Service (November 27 thru December 31)
5	BART Walnut Creek, Rivieria Ave, Parkside Dr, N Civic Dr, N Broadway, Lincoln Ave, Mt Pisgah St, S Main St, Creekside Dr
6	BART Orinda, Orinda Village, Orinda Wy, Moraga Wy, Moraga Rd, St Marys Rd, St Mary's College, Mt Diablo Blvd, BART Lafayette
7	BART Pleasant Hill, Treat Blvd, Bancroft Rd, Ygnacio Valley Rd, Shadelands Office Park, Marchbanks, BART Walnut Creek, Riviera Ave, Buena Vista, Geary Rd
9	DVC, Contra Costa Blvd, Ellinwood Wy, JFK University, Gregory Ln, Cleaveland Rd, Boyd Rd, W Hookston Rd, Patterson Blvd, Oak Park Blvd, Coggins Dr, BART Pleasant Hill, N Main St, N California Blvd, BART Walnut Creek
10	BART Concord, Clayton Rd, Center St, Marsh Creek Rd
11	BART Concord, Port Chicago Highway, Salvio St, Mira Vista Terrace, Fry Wy, Clayton Rd, Market St, Meadow Ln, Oak Grove Rd, Treat Blvd, BART Pleasant Hill
14	BART Concord, Oak St, Laguna St, Detroit Ave, Monument Blvd, Mohr Ln, David Ave, Bancroft Rd, Treat Blvd, BART Pleasant Hill
15	BART Concord, Port Chicago Highway, Salvio St, Parkside Dr, Willow Pass Rd, Landana Dr, West St, Clayton Rd, Treat Blvd, BART Pleasant Hill, Clayton Rd, N Civic Dr, Ygnacio Valley Rd, BART Walnut Creek
16	BART Concord, Oak St, Galindo St, Monument Blvd, Crescent Plaza, Cleaveland Rd, Gregory Ln, Pleasant Hill Rd, Alhambra Ave, Berrellesa St, Escobar St, Court St, Martinez Amtrak
17	BART Concord, Grant St, East St, Solano Wy, Olivera Rd, Port Chicago Highway, BART North Concord
18	BART Pleasant Hill, Oak Rd, Buskirk Ave, Crescent Plaza, Gregory Ln, Pleasant Hill Rd, Taylor Blvd, Morello Ave, Viking Dr, Contra Costa Blvd, DVC, Old Quarry Rd, Pacheco Blvd, Muir Rd, Arnold Dr, Morello, Pacheco Blvd, Martinez Amtrak
19	BART Concord, Galindo St, Concord Ave, Bisso Ln, Stanwell Dr, John Glenn Dr, Galaxy Wy, Diamond Blvd, Contra Costa Blvd, Pacheco Blvd, Martinez Amtrak
20	BART Concord, Grant St, Concord Blvd, Clayton Rd, Gateway Blvd, Willow Pass Rd, Sun Valley Blvd, Golf Club Rd, DVC
21	BART Walnut Creek, N & S California Blvd, Newell Ave, S Main St, Danville Blvd, Railroad Ave, San Ramon Valley Blvd, Danville Park & Ride, Camino Ramon, Fostoria Wy, San Ramon Transit Center
25	BART Lafayette, Mt Diablo Blvd, Highway 24, Highway 680, BART Walnut Creek
28	BART North Concord, Port Chicago Highway, Bates Ave, Commercial Cir, Pike Ln, Arnold Industrial Wy, Marsh Dr, Contra Costa Blvd, Chilpancingo Pkwy, Old Quarry Rd, DVC, Highway 680, Highway 4, Center Ave, VA Clinic, Howe Rd, Pacheco Blvd, Martinez Amtrak
35	BART Dublin, Dublin Blvd, Dougherty Rd, Bollinger Canyon Rd, E Branch Pkwy, Windemere Pkwy, Sunset Dr, Bishop Dr, Executive Pkwy, San Ramon Transit Center
36	BART Dublin, Dublin Blvd, Village Pkwy, Alcosta Blvd, Fircrest Ln, San Ramon Valley Blvd, Tareyton Ave, Bollinger Canyon Rd, Crow Canyon Rd, Executive Pkwy, San Ramon Transit Center
91X	BART Concord, Galindo St, Concord Ave, John Glenn Dr, Galaxy Wy, Chevron, Diamond Blvd, Willow Pass Rd, Gateway Blvd, Clayton Rd, Oak St
92X	Shadelands Office Park, Ygnacio Valley Rd, Highway 680, Danville Park & Ride, Crow Canyon Rd, Bishop Ranch 15, San Ramon Transit Center, Camino Ramon, ATT, Sunset Dr, Chevron, Ace Train Station Pleasanton
93X	BART Walnut Creek, Ygnacio Valley Rd, Shadelands Office Park, Oak Grove Rd, Kirker Pass Rode, Railroad Ave, Buchanan Rd, Somersville Rd, Fairview Dr, Delta Fair Blvd, Highway 4, Hillcrest Park & Ride
95X	BART Walnut Creek, Highway 680, Crow Canyon Pl, Fostoria Wy, Camino Ramon, San Ramon Transit Center



## Route Description Summary

Route #	Description
<b>96X</b>	BART Walnut Creek, Highway 680, Chevron, Bishop Ranch 1, Bishop Ranch 3, Bishop Ranch 6, San Ramon Transit Center, Bishop Ranch 15, Annabel Ln, Bishop Ranch 8, Bishop Dr, Sunset Dr
<b>97X</b>	BART Dublin, Highway 680, Highway 580, Chevron, Bishop Ranch 1, Bishop Ranch 3, Bishop Ranch 6, San Ramon Transit Center, Bishop Ranch 15, Annabel Ln, Bishop Ranch 8, Bishop Dr, Sunset Dr
<b>98X</b>	BART Walnut Creek, N Main St, Highway 680, Sun Valley Blvd, Contra Costa Blvd, Concord Ave, Diamond Blvd., Highway 680, Highway 4, Alhambra Ave, Berrellesa St, Escobar St, Court St, Martinez Amtrak
<b>250</b>	St Mary's College, St Marys Rd, Moraga Rd, Mt Diablo Blvd, BART Lafayette
<b>260</b>	Cal State, East Bay, Concord Bart
<b>301</b>	Rossmoor Shopping Center, Tice Valley Blvd, Boulevard Wy, Oakland Blvd, Trinity Ave , BART Walnut Creek, Ygnacio Valley, Montego, John Muir Medical Center
<b>310</b>	Concord Bart, Clayton Rd, Kirker Pass
<b>311</b>	BART Concord, Port Chicago Highway, Salvio St, Mira Vista Terrace, Fry Wy, Clayton Rd, Market St, Meadow Ln, Oak Grove Rd, Treat Blvd, BART Pleasant Hill
<b>314</b>	Ayers Rd, Concord Blvd, Kirker Pass Rd, Clayton Rd, BART Concord, Oak St, Laguna St, Detroit Ave, Monument Blvd, Mohr Ln, David Ave, Cresce Plaza, Cleaveland Rd, Gregory Ln, Contra Costa Blvd, DVC
<b>315</b>	BART Concord, Port Chicago Highway, Salvio St, Parkside Dr, Willow Pass Rd, Landana Dr, West St, Clayton Rd
<b>316</b>	BART Pleasant Hill, Oak Rd, Buskirk Ave, Crescent Plaza, Gregory Ln, Contra Costa Blvd, Golf Club Rd, DVC, Old Quarry Rd, Pacheco Blvd, Muir Arnold Dr, Pacheco Blvd, Morrelo Ave, Martinez Amtrak, Berrellesa St, Alhambra Ave
<b>320</b>	BART Concord, Grant St, Concord Blvd, Clayton Rd, Gateway Blvd, Willow Pass Rd, Diamond Blvd, Concord Ave, Chilpancinco Pkwy, Old Quarry DVC
<b>321</b>	BART Walnut Creek, N & S California Blvd, Newell Ave, S Main St, Danville Blvd, Railroad Ave, San Ramon Valley Blvd, Camino Ramon, Fostoria Wy, San Ramon Transit Center- Shops at BR.
<b>601</b>	N Civic Dr, Parkside Dr, Riveria Ave, BART Walnut Creek, Trinity Ave, Oakland Blvd, Boulevard Wy, Tice Valley Blvd, Meadow Rd, Castle Hill Rd, Danville Blvd, Hillgrade Ave., Crest Ave, Rossmoor Shopping Center
<b>602</b>	Walnut Blvd, Oro Valley Cir, Mountain View Blvd, Rudgear Rd, Stewart Ave, Trotter Wy, Dapplegray Rd, Palmer Rd, Mountain View Blvd, San Miguel Dr, N & S California Blvd, BART Walnut Creek
<b>603</b>	Camino Pablo, Moraga Rd, St Marys Rd, St Mary's College, Mt Diablo Blvd, BART Lafayette
<b>605</b>	N Civic Dr, N Broadway, Lincoln Ave, Mt Pisgah St, Newell Ave, Lilac Dr, S Main St, Creekside Dr
<b>606</b>	BART Orinda, Orinda Wy, Miner Rd, Honey Hill Rd, Via Las Cruces, Saint Stephens Dr, Orinda Woods Dr, Moraga Wy, Ivy Dr, Moraga Rd, St Marys Rd, St Mary's College, Mt Diablo Blvd, BART Lafayette
<b>608</b>	VA Clinic, Center Ave, Pacheco Blvd, Contra Costa Blvd, Chilpancinco Pkwy, Old Quarry Rd, DVC
<b>609</b>	BART Walnut Creek, Ygnacio Valley Rd, Marchbanks Dr, Walnut Ave
<b>610</b>	BART Concord, Clayton Rd, Ayers Rd, Concord Blvd, Kirkwood Dr, Oakhurst Dr, Center St, Marsh Creek Rd, Mountaire Pkwy, Mountaire Cir
<b>611</b>	BART Concord, Port Chicago Highway, Salvio St, Mira Vista Terrace, Fry Wy, Clayton Rd, Market St, Meadow Ln, Oak Grove Rd, Treat Blvd, Bancroft Rd, Minert Rd
<b>612</b>	BART Concord, Clayton Rd, Ayers Rd, Concord Blvd, Kirker Pass Rd, Washington Blvd, Pennsylvania Blvd, Pine Hollow Rd, El Camino Dr, Michigan Blvd
<b>613</b>	Minert Rd, Oak Grove Rd, Monument Blvd, Detroit Ave, Laguna St, Oak St, BART Concord
<b>614</b>	BART Concord, Clayton Rd, Michigan Blvd, Pennsylvania Blvd, Pine Hollow Rd, El Camino Dr
<b>615</b>	Concord Blvd, Landana Dr., Willow Pass Rd., Parkside Dr., Salvio St., East St., clayton Rd., Oakland Ave., Mount Diablo St., BART Concord
<b>616</b>	Treat Blvd, Bancroft Rd, Minert Rd, Oak Grove Rd, Monument Blvd, San Miguel Rd, Galindo St, Oak St, BART Concord

## Route Description Summary

Route #	Description
619	Minert Rd, Oak Grove Rd, Monument Blvd, Mohr Ln, David Ave, Bancroft Rd, Treat Blvd, BART Pleasant Hill
622	Pine Valley Rd, Broadmoor Dr, Montevideo Dr, Alcosta Blvd, Crow Canyon Rd, Tassajara Ranch Rd, Camino Tassajara
623	Danville Blvd, Stone Valley Rd, Green Valley Rd, Diablo Rd, Hartz Ave, San Ramon Valley Blvd, Sycamore Valley Rd, Camino Tassajara, Tassajara Ranch Rd, Crow Canyon Rd, Anabel Ln
625	Rossmoor Shopping Center, Tice Valley Blvd, Olympic Blvd, Pleasant Hill Rd, Acalanes Ave, Stanley Blvd, Mt Diablo Blvd, BART Lafayette, Happy Valley Rd, Upper Happy Valley Rd, El Nido Ranch Rd, Hidden Valley Rd, Acalanes Rd
626	St Mary's College, St Marys Rd, Rohrer Dr, Moraga Rd, Mt Diablo Blvd, BART Lafayette, Happy Valley Rd, Upper Happy Valley Rd, El Nido Ranch Rd, Hidden Valley Rd, Acalanes Rd
627	BART North Concord, Port Chicago Highway, Bates Ave, Mason Cir
635	Bollinger Canyon Rd, Dougherty Rd, Crow Canyon Rd, Tassajara Ranch Rd, Camino Tassajara, Lusitano St, Charbray St
636	San Ramon Transit Center, Executive Pkwy, Crow Canyon Rd, Bollinger Canyon Rd, San Ramon Valley Blvd, Broadmoor Dr, Alcosta Blvd, Fircrest Village Pkwy, Dublin Blvd, BART Dublin