



Construction Notice: May 10, 2016 Southbound I-680 Rudgear Road Nighttime On-Ramp Closure

Summary

Upcoming construction activity for the Express Lanes on I-680 between Walnut Creek and San Ramon requires a temporary, nighttime ramp closure. The construction activity will include the installation of conduit under the ramp to connect to power sources. The following ramp closure is scheduled:

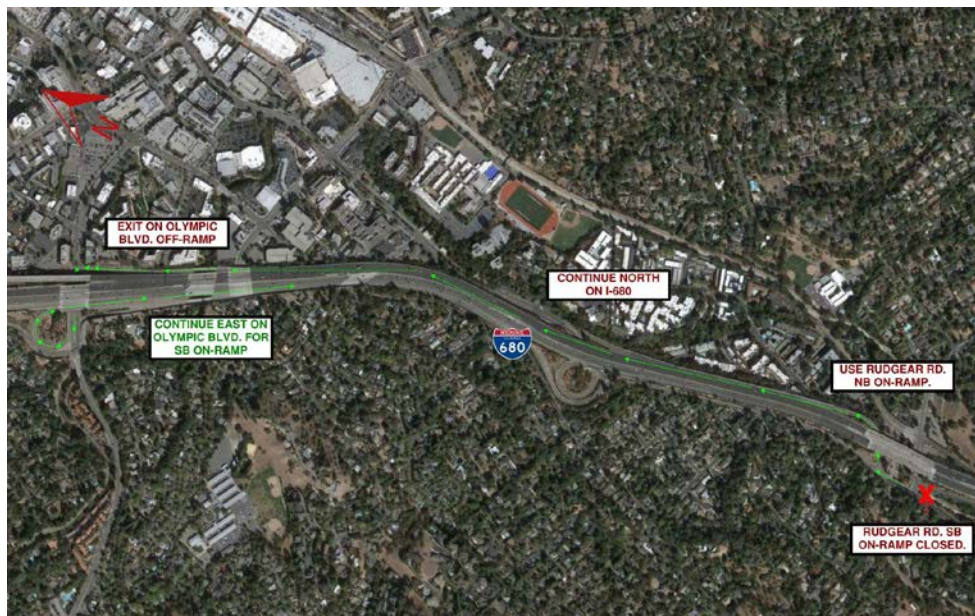
- The southbound Rudgear Rd. on-ramp is scheduled to be closed from 8 p.m. until 5 a.m. each night Monday, May 16 through Friday, May 20.

Things to know:

- Detour route for the southbound I-680 Rudgear Rd. on-ramp closure:
 - Enter northbound I-680 from Rudgear Rd.,
 - Continue on northbound I-680,
 - Exit on the Olympic Blvd. off-ramp,
 - Continue east on Olympic Blvd.,
 - Enter southbound I-680.
- When traveling near the construction site:
 - *Always* use caution
 - Be prepared to reduce speeds
 - Follow posted signs

Construction is a dynamic process and information is subject to change without notice. Work is subject to weather conditions.

Detour Route for the Southbound I-680 Rudgear Road On-Ramp Closure



Contact Us

PHONE: 510-817-5757
PHONE beginning May 23: 415-778-5231
info@bayareaexpresslanes.org



METROPOLITAN
TRANSPORTATION
COMMISSION

www.mtc.ca.gov



twitter.com/511SFBay



facebook.com/511SFBay