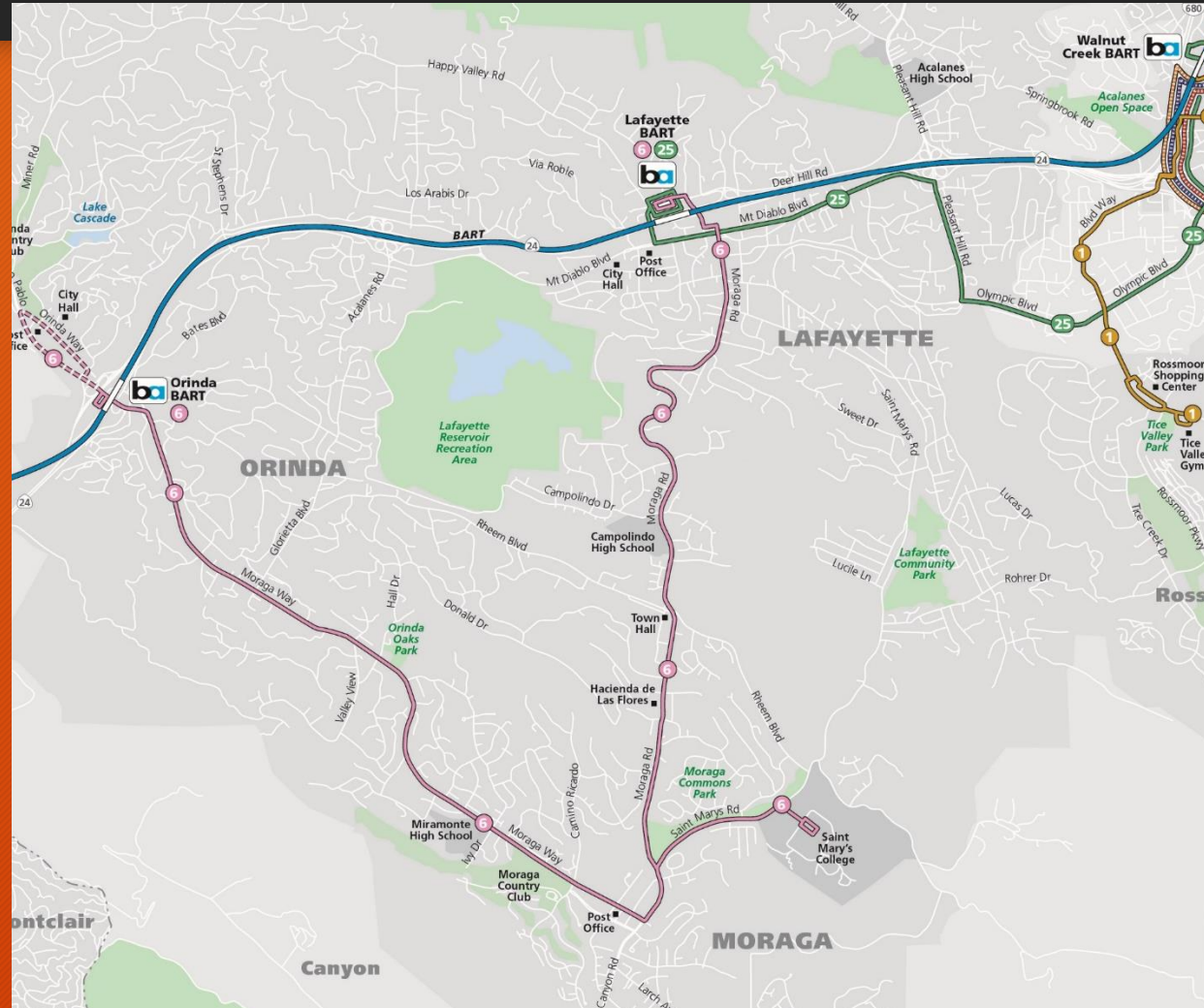


# Lamorinda Existing Service Profile

17



## 6-Lafayette/Moraga/Orinda

Lafayette BART, St. Mary's College, Moraga, Orinda BART

5:40am to 8:45pm

Frequency: every 40 min peak / 120 minutes off-peak

## 25-BART Lafayette/BART Walnut Creek

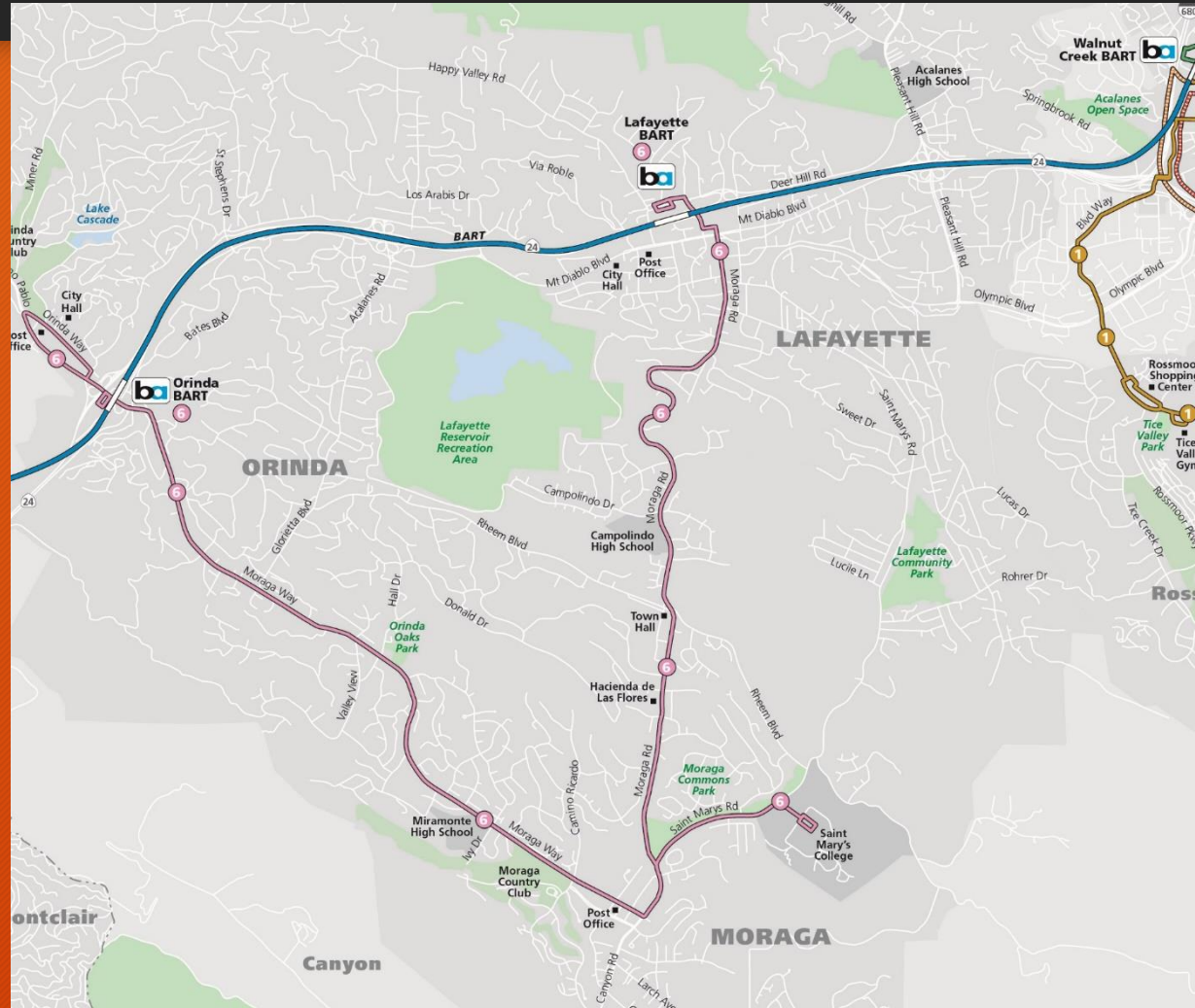
Lafayette BART, Mt. Diablo Blvd., Walnut Creek BART

7:30am to 6:53pm

Frequency: every 60 min peak/ 110 min off-peak

# Lamorinda Proposed Service Profile

18



## 6-Lafayette/Moraga/Orinda

Lafayette BART, St. Mary's College,  
Moraga, Orinda BART

5:40am to 8:45pm

Frequency: every 20-30 min peak / 120  
minutes off-peak

25-BART Lafayette/BART Walnut Creek

Eliminated due to low ridership



# Lamorinda Restructure Concepts:

19

