

# San Ramon Existing Service Profile

23

## 21-BART Walnut Creek/San Ramon

Walnut Creek BART, Alamo, Danville Blvd, Danville Park 'n Ride, San Ramon Transit Center

5:30am to 11:20pm

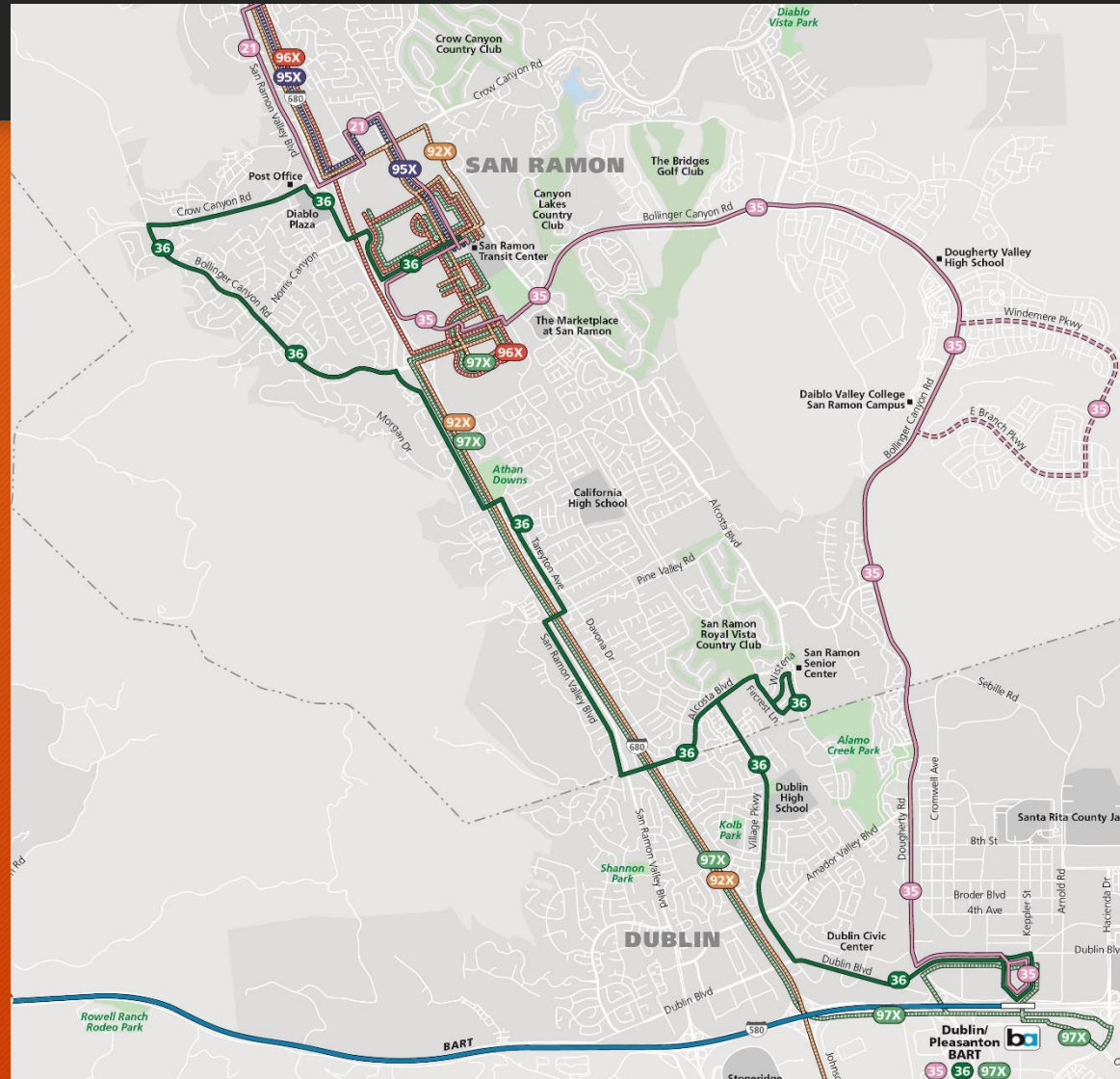
Frequency: every 30 min peak/ 60 min off-peak

## 35-BART Dublin/San Ramon

San Ramon Transit Center, Bollinger Canyon Rd., Dougherty Rd., Dublin BART

6:00am to 8:17pm

Frequency: every 30 min peak / 60 minutes off-peak



## 36-San Ramon/BART Dublin

San Ramon Transit Center, San Ramon, Dublin BART

6:20am to 9:00pm

Frequency: every 60 min

## 92X-ACE Express

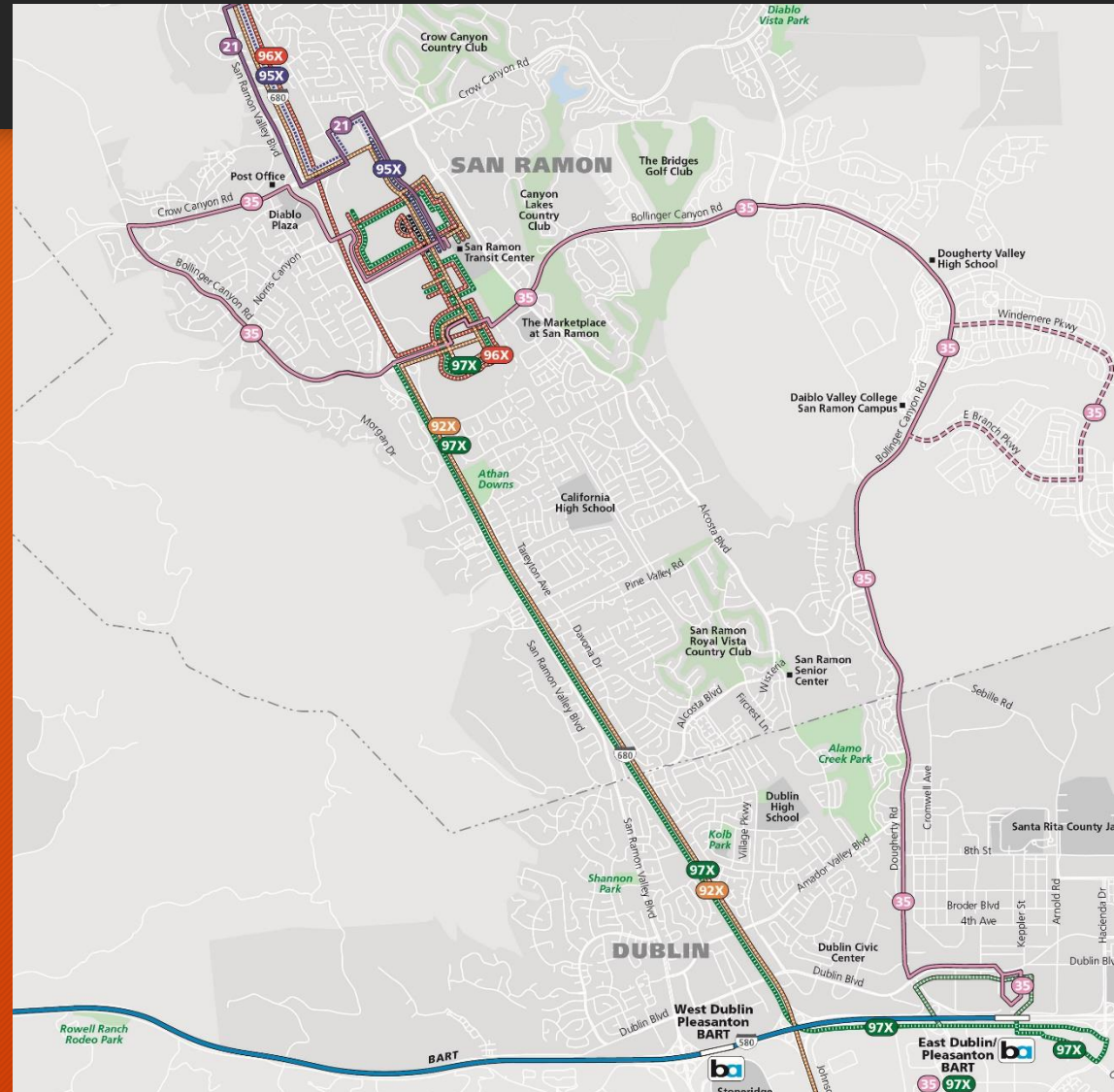
Pleasanton Train Station (ACE), Bishop Ranch, San Ramon Transit Center

5:35am to 7:31pm

Frequency: every 60 min peak / none off-peak

# San Ramon Proposed Service Profile

24



## 21-BART Walnut Creek/San Ramon

Walnut Creek BART, Alamo, Danville Blvd, Danville Park 'n Ride, San Ramon Transit Center

5:30am to 11:20pm

Frequency: every 30 min peak/ 60 min off-peak

## 35-BART Dublin/San Ramon

San Ramon Transit Center, Crow Canyon Rd, Bollinger Canyon Rd., Dougherty Rd., Dublin BART

6:00am to 8:17pm

Frequency: every 20 min peak / 40 minutes off-peak

## 36-San Ramon/BART Dublin

Eliminated due to low ridership

## 92X-ACE Express

Pleasanton Train Station (ACE), Bishop Ranch, San Ramon Transit Center

5:35am to 7:31pm

Frequency: every 60 min peak / none off-peak



# Core Restructure Concepts: San Ramon Overview

25

