

**To:** Advisory Committee

**Date:** May 28, 2026

**From:** Pranjal Dixit, Manager of Planning

**Reviewed by:** AMS

---

**SUBJECT:** Summer Bid Update

---

**Background:**

Up to four times a year, County Connection updates its service and schedules to reflect current passenger demand, traffic conditions, school schedules, staffing, and funding availability. These service changes coincide with the start of the four annual bid periods, commonly known as the Spring, Summer, Fall, and Winter Bids. To ensure regional coordination, two of the four bids are aligned with other Bay Area transit agencies, specifically for the January and August service dates. Furthermore, the persistent increase in regional traffic congestion has necessitated frequent schedule adjustments to maintain reliable service delivery.

**Summer Bid Changes:**

Effective June 7, 2026, the Summer Bid will include several key adjustments designed to improve reliability, connectivity, and overall rider experience, including the following:

- **Routes 6, 18, and 19 (Lamorinda, Pleasant Hill, Martinez, and Concord)**  
Schedules are being modified to ensure better on-time performance and to maintain operator recovery time in light of increased traffic congestion.
- **Routes 93X, 95X, and 96X (San Ramon, Danville, Walnut Creek, Concord, and Antioch)**  
Schedules are being modified to address increased travel times due to afternoon congestion on I-680. Two afternoon trips on Route 93X are being consolidated into a single trip.
- **New Stops (Martinez and Concord)**  
Two new transit stops will go into service: an upgraded stop featuring a bench in front of the new development at 1335 Galindo Street in Concord, and a brand-new stop at the intersection of Center Avenue and Vine Hill Way in Martinez.
- **Operational Modifications (Routes 10, 20, 11, 15, 18, 19, 21, 35, 93X, 95X, and 96X)**  
The operator assignments for these routes are being modified to interline routes to allow for better resource management and give our operators more recovery time between runs, leading to more reliable service.

**Ridership Trends:**

Following three years of sustained growth, ridership has begun to stabilize, as illustrated in **Figure 1**, with weekend ridership and school services both above pre-pandemic levels. While weekend ridership has recently begun to plateau, school ridership has continued to grow, reflecting shifting rider demographics

and the positive impact of youth programs such as last summer’s Youth Ride Free pilot program and Pass2Class. As of April 2026, ridership on weekends and on our 600-series school routes reached 120% and 112% of pre-pandemic levels respectively, while ridership on weekday local routes sits at 83% of pre-pandemic levels, and weekday express routes are at 51% of pre-pandemic levels. Systemwide ridership is at 84% of pre-pandemic level year-to-date.

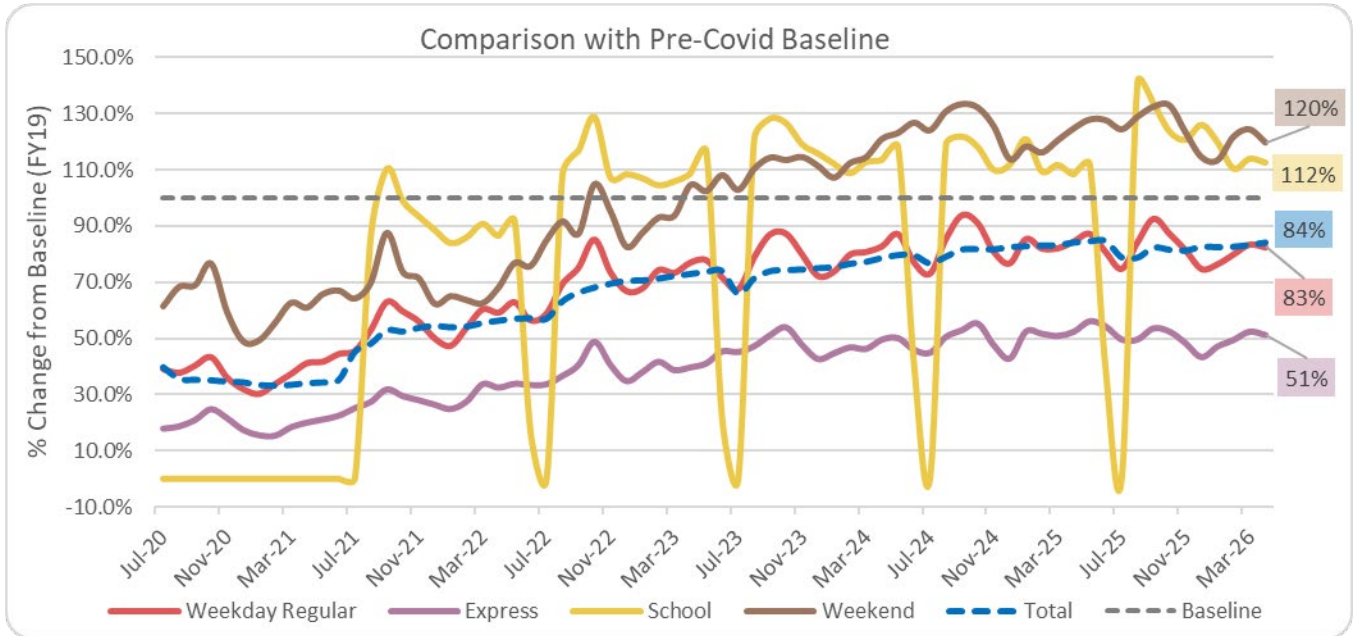


Figure 1: Ridership Recovery Trend

**Financial Implications:**

None, for information only.

**Recommendation:**

None, for information only.

**Action Requested:**

None, for information only.

**Attachments:**

None.